

MaxLite LED Lighting Delivers Critical Energy Savings for Franklin Medical Offices



"Besides the energy savings, the main difference from the old lighting is that the look is totally different. The colors varied throughout the old system – some spots were very bright, some were yellow. It looked terrible!"

"With the new LED fixtures, every area is evenly lit. As soon as you walk into the lobby, you can see the brightness and the difference it makes. The staff and patients noticed it right away"

-- Wahid Benabbas, Certified Reliability Engineer, Kaiser Permanente

Kaiser Permanente Franklin Medical Offices, a full-service medical and surgical

center in Denver, Colorado, installed more than 5,000 MaxLite LED ceiling panels, replacement lamps and parking fixtures in a large-scale lighting renovation designed to improve the quality of lighting in the facility, while simultaneously lowering energy and maintenance expenses.

The building had a variety of different types of fluorescent fixtures and troffers that needed to be replaced. The majority of the troffers required a fixture with an upscale appearance that was sealed to keep dust and insects out. Ellie Fargher and the team at SoGoGreen LED Lighting, selected MaxLite's ArcMAX LED Volumetric Panels for its efficiency and high-end design to replace more than 2,400 fluorescent fixtures in offices, corridors, reception and waiting areas throughout the building. Dimming controls were installed in office areas to give employees the ability to customize the light to their individual preferences.

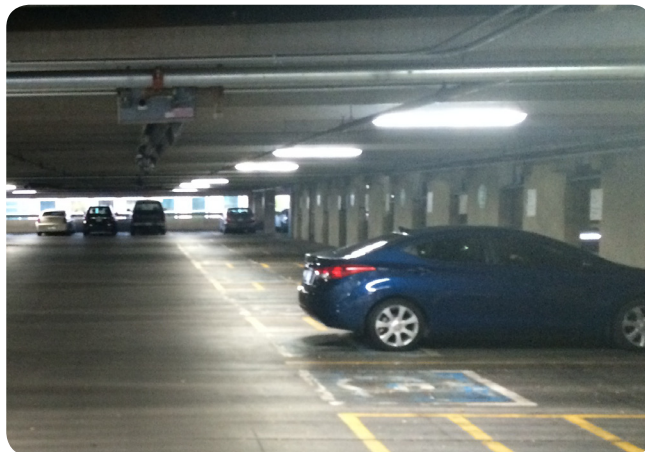
"The specific style of troffer they wanted was a sealed fixture that wouldn't allow bugs and dust to accumulate," Fargher noted. "The ArcMAX fit that design, as well as being a very attractive fixture."

The ECO-T LED Recessed Troffer was also installed in corridor ceilings. MaxLite's LED Commercial and Recessed Downlight Retrofits in four-, six- and eight-inch apertures were used for general hallway and waiting area lighting applications, while hundreds of LED T8, PL, BR, MR16 and A19 replacement lamps were installed in fixtures throughout the building. The parking garage outside the medical center also received a lighting upgrade with the installation of 390 LED Vapor Tight fixtures.



"One of the areas in which the new lighting made the biggest difference was the parking garage," said Wahid Benabbas, a certified reliability engineer at Kaiser Permanente. "The garage is huge, with some floors that are below ground. The new fixtures are much brighter than the old ones, making our employees and patients feel much more comfortable and secure walking through the garage, especially late at night."

By choosing MaxLite LED lamps and fixtures that were eligible for utility rebates, Kaiser Permanente Franklin Medical Offices saved nearly \$220,000 on the up-front cost of the fixtures. Making the switch from fluorescent and incandescent light sources to LED will save the center \$80,211 annually in energy costs.



Before: The reception area was unevenly lit by suspension-mounted linear fixtures.



After: ArcMAX Volumetric Panels produce brighter, more even illumination that enhances the interior design.



MaxLite

MaxLite has been committed to providing energy efficient lighting products for more than 20 years. One of the first movers into LED technology in the industry, MaxLite offers an extensive line of indoor and outdoor LED lamps and luminaires under the MaxLED® brand. A three-time recipient of the prestigious ENERGY STAR® Partner of the Year Award for its industry leadership, MaxLite continues to be at the forefront of energy-efficient technologies through the innovative research and development capabilities of its New Jersey headquarters and California office.

