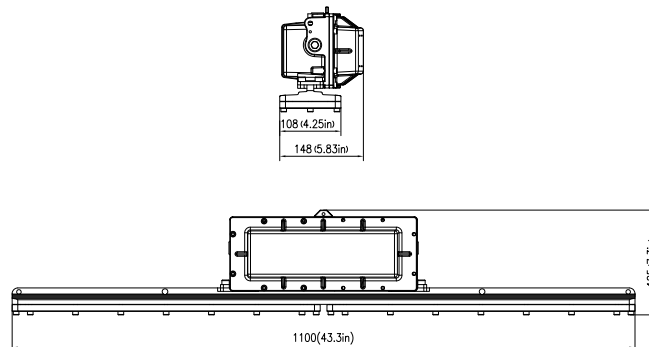
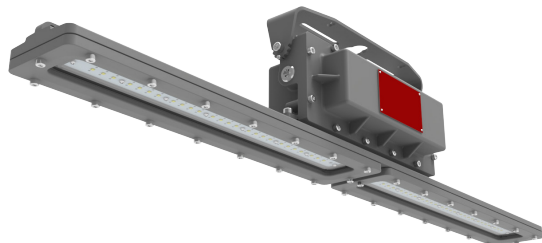


LINEAR CLASS I DIVISION 1 EMERGENCY | HL-LI SERIES



The **HL-LI SERIES** is a linear LED luminaire engineered to stand up to the toughest operating conditions in **Class I Division 1** environments made hazardous by the presence of flammable vapors or gases or combustible dusts. A slim and lightweight profile and variety of mounting options enable this long-lasting, high-performance fixture to address virtually any lighting need.



CLASSIFICATIONS & RATINGS:

- UL 844
- UL924
- Class I, Division 1, Groups C, D

FEATURES:

- Slim and compact design
- Power Factor: > 0.95
- Second retention point integral to fixture

APPLICATION:

- Mining Sites/Heavy Industries
- Storage Facility/Paper Mills
- Wastewater Treatment Plants
- Chemical Processing Facility
- Petrochemical PProcessing Facility

CONSTRUCTION:

- Copper Free aluminum housing
- Stainless steel hardware
- Thermal shock and impact resistant PMMA tempered glass lens

MOUNTING:

- Ceiling/Wall Mount
- Pendant Mount
- Stanchion Mount
- Hanging Chain Mount

MODEL SELECTION		Typical order example: HL-LI488OUP-D1EM2									
HL											
FAMILY	LENGTH	NOMINAL WATTAGE	VOLTAGE	DISTRIBUTION	LENS	CCT	MOUNTING	CLASSIFICATION	OPTIONS		
HL-LI= Hazardous Location, Linear series	48= 48 in.	80= 80W	U= 120-277V	[Blank]= Wide, 110° N= Narrow, 60° T= Type II	[Blank]= Clear D= Diffused [Blank]= Clear	[Blank]= 5000K	P= 3/4" NPT Pendant /Yoke Bracket	DI= CID1	EM2= Battery back up -20 degree C, Gray Finish		

LINEAR CLASS I DIVISION 1 EMERGENCY | HL-LI SERIES

ITEM #	DESCRIPTION	ITEM IMAGE
HLSC250	Rig-a-lite 10128R Lighting Fixture Safety Cable, 4' Long 250 lbs. Rating	

SPECIFICATIONS:		HL-LI4880UxxP-D1EM2	
ITEM	SPECIFICATION	DETAILS	
GENERAL PERFORMANCE	Input Power (W)	80W standard mode	6W in Emergency Mode
	Lumens Delivered (lm)	10,000 lm standard	750 lm in Emergency mode
	Efficacy (lm/W)	125	
	CRI	> 70	
	Lumen Maintenance (L70, TM-21 @ 25°C)	>50,000	
	Color Temperature	5000K	
	Spacing Criteria	Available upon request	
ELECTRICAL	Power Factor	>0.95	
	Input Voltage	120-277V	
	Weight	12.2kg/26.9 lbs	
	Dimensions	47.2" x 4.3" x 7.3"	
	Humidity	5% - 95% RH, non-condensing	
	Operating Temperature	-20°C to + 45°C (-4°F to + 113°F)	
	Temperature Rating	T6	
CERTIFICATION	Certification	UL844, UL 8750, UL924, FCC	
	Environment	IP66	
	Material Usage	RoHS compliant; no mercury	
	Warranty	5 years	

MOUNTING OPTIONS:

Hardware required to alter the standard mounting option into other variations is not provided by Maxlite



Pendant Mount



Ceiling Mount



Hanging Chain Mount



Pipe Mount