

LED DOUBLE-SIDED T8 SIGN RETROFIT SERIES



PRODUCT DESCRIPTION:

Featuring high quality, energy-saving LED modules on two sides, MaxLite LED Double-Sided T8 Lamps are designed for lighting marquees, roadway signs and many other types of outdoor and indoor displays. Designed to replace T12 HO fluorescent tubes, MaxLite LED lamps reduce energy usage by up to 62 percent and offer a much longer, maintenance-free life of 50,000 hours. Unlike standard LED lamps with 120° to 180° beam angles, the MaxLite Double-Sided T8 Lamp offers a virtual 360-degree distribution with individual optics that create bright and uniform illumination without any dark spots. The lamp is issued in a 6500K color temperature to provide the best color quality and visual impact; additional color temperatures are available on custom order.

FEATURES:

- Input Power: 23W - 53W
- Input Voltage: 120-277VAC, ballast bypass
- Lumens: 2,500-5,800
- Double-sided LEDs designed for a virtual 360° illumination
- 330° beam angle
- Individualized optics for superior light distribution and uniformity
- Standard R17d end caps, nonrotatable
- Integrated heat sink for cool operation and longevity
- Color Rendering Index (CRI): ≥80
- CCT: 6500K
- Lumen Maintenance (L70): 50,000 hour life
- THD <20%
- Power Factor: ≥0.9
- Instant-on, flicker-free, mercury-free
- No UV or IR minimizes fading or discoloration
- Durable polycarbonate construction
- Non-Dimmable

- Seven year limited warranty
- Suitable for use in dry and damp locations
- Not for use with T12 magnetic or electronic ballasts
- Not for use with T8 magnetic or electronic ballasts

APPLICATION:

- Box sign lighting
- Light boxes
- Backlit displays
- General lighting

SPECIFICATIONS:

ITEM	SPECIFICATION	DSL23T8SE465	DSL30T8SE565	DSL42T8SE665	DSL53T8SE865
GENERAL PERFORMANCE	Power Consumption	23W	30W	42W	53W
	Lumens Delivered	2,500	3,200	4,300	5,800
	Efficacy (lm/W)	≥102			
	CRI	≥80			
	Beam Angle	330°			
	Color Temperature (CCT)	6500K			
	Lumen Maintenance (L70)	50,000 Hours			
ELECTRICAL	Power Factor	≥ 0.90			
	Input Voltage	120V-277V, 50/60 Hz			
PHYSICAL	Operating Temperature	-4°F to 122°F (-20° - 50° C)			
	Lens	Clear			
	Base	R17d end cap, nonrotatable			
	Dimension (MOL" x Dia.)	45.80" x 1.11"	57.80" x 1.11"	69.80" x 1.11"	93.80" x 1.11"
CERTIFICATION	Certification	Recognized Component			
	Material Usage	RoHS compliant; no mercury			
	Environment	Dry or Damp			
	Warranty	7 Years			

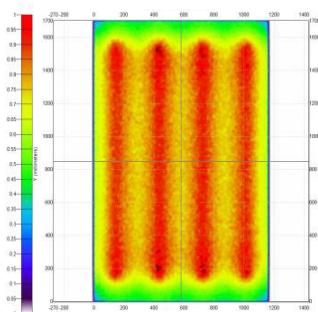
Lighting layouts and spacing criteria available upon request

ORDERING:

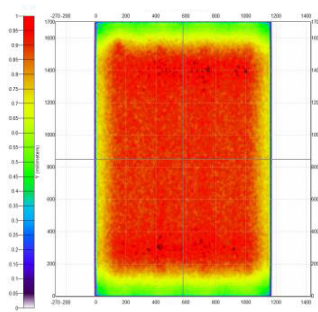
ITEM NUMBER	ORDER CODE	LAMP WATTAGE (W)	LUMENS	INPUT VOLTAGE (V)	CCT	CRI	BEAM ANGLE (°)
4FT							
DSL23T8SE465	1408994	23W	2,500	120-277V	6500K	80	330°
5FT							
DSL30T8SE565	1408995	30W	3,200	120-277V	6500K	80	330°
6FT							
DSL42T8SE665	1408996	42W	4,300	120-277V	6500K	80	330°
8FT							
DSL53T8SE865	1408997	53W	5,800	120-277V	6500K	80	330°

LIGHT BOX COMPARISON

FLUORESCENT T12HO



LED T8



Specifications are subject to change without notice.