

MaxLite®

A NEW WAVE OF LIGHT



LED PANEL & TROFFER FIXTURE SOLUTIONS
SEPTEMBER 27, 2018

Agenda

- **Panels & Troffers**
 - Eco-T Recessed Troffer
 - What Differentiates Flat Panels?
 - FlatMax® Edge Lit Panels
 - ArcMax Volumetric Troffers
 - Indirect Troffer
 - Controls
- **Retrofits**
 - Lensed Retrofit Kit
 - Troffer Retrofit Kits
- **Pendants**
- MaxLite University
- Subscribe
- Social Media
- Q&A



MaxLite Presents:
LED Panel & Troffer Fixture Solutions

Thursday, 9/27/18 @ 2pm EST



MaxLite offers a full range of panels, troffers, troffer retrofits and pendants for commercial lighting applications. Join us Thurs. September 27 as we review the portfolio, discuss product options such as emergency battery backup and lighting controls, and announce the latest additions to the line-up!



Click Here To Register Now!

 Add this webinar to your calendar
(If prompted to OPEN or SAVE, choose OPEN)

QUESTIONS?

QUESTIONS/ANSWERS

Please feel free to ask questions at any time during the presentation. There will also be an opportunity to ask questions at the conclusion of today's webinar. Any questions that cannot be answered during the webinar will be answered via email.

FOR MORE INFORMATION ABOUT OTHER MAXLITE PRODUCTS, OR FOR LIGHTING QUESTIONS IN GENERAL; PLEASE CONTACT:

info@maxlite.com

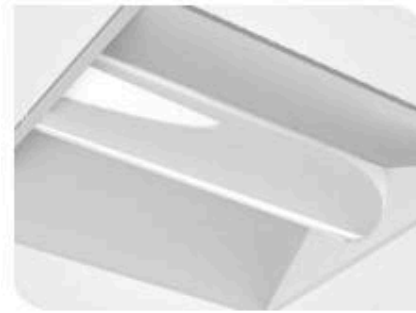
<http://www.maxlite.com>

1-800-555-5629

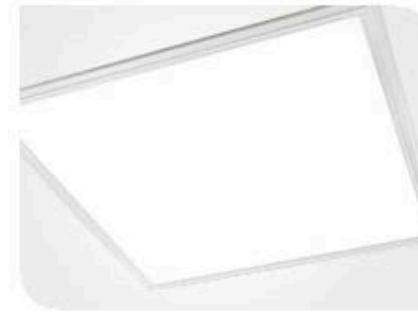


Panels & Troffers

MaxLite has a panel or troffer for every application. We'll begin by reviewing our ArcMax, ECO-T, FlatMax Edge Lit Flat Panels, and Indirect Troffers.



ArcMax Volumetric Troffer



FlatMAX® Edge Lit Flat Panels



ECO-T Recessed Troffer



Indirect Troffer

ECO-T RECESSED TROFFER

ECO-T Overview:

ECO-T offers a classic recessed housing with LED strips that resemble fluorescent tubes when lit. While fluorescent fixture scan buzz and flicker and contribute to headache and eye fatigue, ECO-T is constructed with LM-80-rated LEDs and a prismatic clear diffuser for higher lumens, making it the silent and flicker free solution for offices, lobbies, hallways and conference rooms in schools, municipalities, airports, healthcare facilities, showrooms, corporate campuses and retailers trying to stretch renovation and construction budgets. With standard 0-10v dimming provided, ECO-T maintains 90 percent of the light in a 60-degree beam angle to project light downward towards surfaces.



ECO-T RECESSED TROFFER

Model	Size	Wattage	Lumens
MLRT22D32xx	2' x 2'	32	3,400
MLRT24D42xx	2' x 4'	42	4,500



A NEW WAVE OF LIGHT

PROJECT NAME: _____ CATALOG NUMBER: _____

NOTES: _____ FIXTURE SCHEDULE: _____

Page: 1 of 2

ECO-T 2x2' & 2x4' LED RECESSED TROFFER
MLRT SERIES

PRODUCT DESCRIPTION:
Containing high efficiency and a high quality light in a performance and value-optimized package, MaxLite's ECO-T™ LED Recessed Troffer represents the inflection point to making LEDs a cost-effective replacement for fluorescent troffers in lay-in or T-grid ceilings for the commercial and institutional market, including schools and municipalities.

ECO-T offers a classic recessed housing with LED strips that resemble fluorescent tubes when lit. While fluorescent fixtures can buzz and flicker and contribute to headache and eye fatigue, ECO-T is constructed with LM-80-rated LEDs and a prismatic clear diffuser for higher lumens, making it the silent and flicker-free solution for offices, lobbies, hallways and conference rooms in schools, municipalities, airports, healthcare facilities, showrooms, corporate campuses and retailers trying to stretch renovation and construction budgets. With standard 0-10v dimming provided, ECO-T maintains 90 percent of the light in a 60-degree beam angle to project light downward towards surfaces.

FEATURES:

- Surface mount kit available
- 9 lbs.
- 0-10V dimming standard
- CRI >82
- IC-Rated
- Fits standard T-bar grid (drop ceilings)
- Available in 2'x2' and 2'x4'
- Room side access door to service and upgrade LED strips
- Suitable for damp locations
- Five year limited warranty

MODEL SELECTION (if list of order codes on pg. 2) Typical order example: MLRT22D294-150

MLRT	22D	23	150	
FAMILY	SIZE	WATTAGE	CCT	VERSION
MLRT- ECO-T	22D+ 2x2' Dimmable	23+ 23 watts	35+ 3500K 41+ 4100K 50+ 5000K	150+ Generation 2

MODEL SELECTION (if list of order codes on pg. 2) Typical order example: MLRT24D741-150

MLRT	24D	37	150	
FAMILY	SIZE	WATTAGE	CCT	VERSION
MLRT- ECO-T	24D+ 2x4' Dimmable	37+ 37 watts	35+ 3500K 41+ 4100K 50+ 5000K	150+ Generation 2

Phone: 1-800-555-5629 | Fax: 973-244-7333 | Web: www.maxlite.com | E-mail: info@maxlite.com Revised: 03-31-17 MAX15135

WHAT DIFFERENTIATES FLAT PANELS?

LIGHT GUIDE PLATE MATERIAL

- PS, MS, PMMA
- PS lenses are inexpensive, but can turn yellow after less than 5 years. PMMA has the best optical performance and the highest cost. MS has a good optical performance and will not yellow during the 5 year warranty of the product.
- MaxLite panels use MS

BACK PLATE THICKNESS

- Some panels have back plates that are too thin to provide stability
- MaxLite's panels are stable and dependable when mounted using any of our mounting options (grid, surface, cable hang)

COLOR (CCT) CONSISTENCY

- Without tight LED binning, the CCT of the panels can differ significantly, enough to be easily visible to the naked eye
- MaxLite controls binning to a tighter specification than some other companies

RELIABILITY OF THE BRAND

- Many flat panel manufacturers have been in the market for a very short period of time
- MaxLite warrants panels for 5 years, and the customer can feel confident that we will be around to do so
- Low failure rate on our flat panels (< 0.5%)



FLATMAX® EDGE LIT FLAT PANELS

FlatMax® Edge Lit Flat Panels Overview:

Designed to produce beautifully even, shadowless light, FlatMAX® Edge Lit LED Panels are the perfect energy-efficient replacement for fluorescent fixtures. The family includes a solution for every application requirement, from low wattage to high voltage, in standard sizes (1'x4', 2'x2' and 2'x4'). The panels are fully dimmable, and may be combined with IntelliMax™ wireless lighting controls, for further energy savings in office, school, healthcare, and other commercial and industrial environments. Select FlatMAX models are available with an integral, remote-controlled motion sensor that can control multiple units via 0-10V connection. All models are DLC Standard or Premium listed, enabling facilities to take advantage of utility rebate programs.



FLATMAX[®] EDGE LIT FLAT PANELS

Model	Size	Wattage	Lumens
MLFP14EPxxxx	1' x 4'	20 / 30	2,400 / 4,700
MLFP22EPxxxx	2' x 2'	20 / 30 / 35	2,400 / 3,600 / 4,500
MLFP24EPxxxx	2' x 4'	30 / 40 / 48	3,500 / 4,500 / 5,900



IntelliMax[®]
COMPATIBLE

PROJECT NAME: _____ CATALOG NUMBER: _____

NOTES: _____ FIXTURE SCHEDULE: _____

Page: 1 of 6

LED FLAT PANEL EDGE LIT
MLFP SERIES G2

PRODUCT DESCRIPTION:
Typically used to replace 1'x4' 2'x2' and 2'x4' fluorescent fixtures, the FlatMax Edge Lit LED Flat Panel Series is designed to lay in drop ceilings in offices, schools, and healthcare applications. Utilizing 0-10v dimming protocols, the flat panels are fully dimmable, and are compatible with building controls, motion sensors, timers, and daylight harvesting systems.

The design of the panels produces an even, consistent shadowless light. The LEDs enable long life, high lumen maintenance, and are low maintenance and constructed without hazardous materials.

FEATURES:

- Standard dimming: 0-10V dimming
- CRI: 80
- Fits standard T-bar and narrow grid drop ceilings
- Available in 1'x4', 2'x2' and 2'x4' sizes
- Standard white finish
- IC Rated for direct insulation contact
- Bi-Level motion sensor available behind lens for sleek appearance
- Multiple fixtures can be controlled by single sensor

APPLICATIONS:
FlatMax Edge Lit LED Flat Panels are the ideal energy-efficient replacements for fluorescent fixtures in offices, schools, hospitality, healthcare, and other commercial and industrial applications that require slim installation depth.

MODEL SELECTION (Full list of order codes on pg. 3-6)		Typical order example: MLFP22EP3580			
MLFP	SIZE	WATTAGE (NOMINAL)	CCT	BATTERY BACKUP	MOTION SENSOR
MLFP Flat Panel Edge Lit	14EP= 1'x4'	20= 20W 30= 30W 35= 35W	35= 3500K 4041= 4000K/4100K 50= 5000K	(OMIT)= None EM= Battery Backup Unit	(OMIT)= None MS= Motion Sensor
	22EP= 2'x2'	20= 20W 30= 30W 35= 35W			
	24EP= 2'x4'	30= 30W 40= 40W 48= 48W			

NOTES:

1. In the event of a power failure, the battery backup unit will take no more than 90 minutes to recharge and operate the fixture for at least 90 minutes.
2. 1x4 20W, 2x2 20W, and 2x4 48W EM modules not UL listed.
3. 1x4 20W, 2x2 20W, and 2x4 20W EM modules not UL listed.
4. 1x4 20W, 2x2 20W, and 2x4 48W EM modules not available with MS option.

MAX18094
Revised: 09-24-18

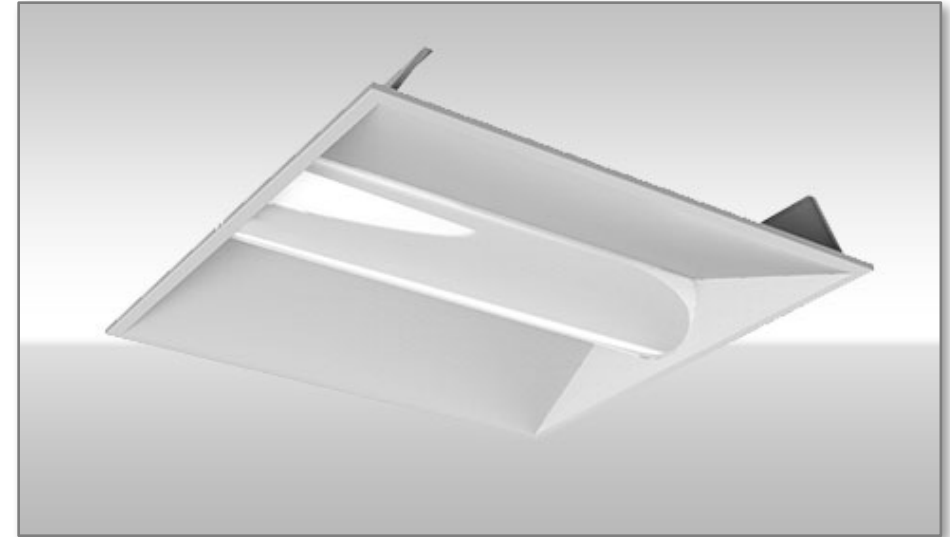
Phone: 1-800-555-5629 | Fax: 973-244-7333 | Web: www.maxlite.com | E-mail: info@maxlite.com

ARCMAX VOLUMETRIC TROFFERS

ArcMax Overview:

Designed as cost-effective replacements for traditional fluorescent troffers, the DesignLights Consortium®-qualified ArcMAX™ Volumetric LED Panels are ideal for installation in T-bar grid or drop-in ceilings. The ArcMAX delivers excellent color rendering and smooth light output from ceiling to floor in offices, schools, hospitals, government buildings, retailers and other commercial settings.

The panels offer a high performance optic system, advanced light distribution and architectural styling that deliver unprecedented value and quality. The fixtures also provide voluminous, upscale looking lighting for the specification community.



ARCMAX VOLUMETRIC TROFFERS

Model	Size	Wattage	Lumens
MLVT14D36xx/SB	1' x 4'	36	3,800
MLVT22D36xx/SB	2' x 2'	36	3,700
MLVT24D45xx/SB	2' x 4'	45	5,000



A NEW WAVE OF LIGHT

PROJECT NAME _____ CATALOG NUMBER _____

NOTES _____ FIXTURE SCHEDULE _____

Page 1 of 4

ArcMAX SB SERIES

MLVT14D

MLVT22D

MLVT24D

PRODUCT DESCRIPTION:
The MaxLite ArcMAX™ Lay-in LED panels are LED replacements for fluorescent troffers in new or remodel construction. MaxLite's performance optic system, advanced light distribution and architectural styling delivers unprecedented value. High efficiency, excellent color rendering, and low glare combined with a sustainable construction positions these fixtures as ideal solutions for offices, schools, hospitals, retail, and other applications.

FEATURES:

- 36W & 45W
- Available in 3500K, 4000K
- 50,000 Hr. life
- Dimming 0-10V standard
- CRI >80
- Controlled brightness optic eliminates pilotage
- LM-79 test data available
- Available in 1'x4', 2'x2', and 2'x4'
- Five year limited warranty

CONSTRUCTION:

- Steel housing and reflectors
- Angled interior end caps with powder coat finish
- PC reflector end caps
- Polycarbonate milky white diffuser cover
- External driver housing with rear access

MODEL SELECTION (Full list of order codes on pg. 2) Typical order example: MLVT22D36xx/SB

MLVT	SIZE	WATTAGE (NOMINAL)	CCT	VERSION	OPTIONS	
MLVT-	Volumetric Troffer	14D- 1' x 4' Dimmable 22D- 2' x 2' Dimmable 24D- 2' x 4' Dimmable	36- 36W 36- 36W 45- 45W	35- 3500K 40- 4000K	SB- Single Bracket Version	(OMT)- None EM- Emergency Battery Backup MS- 0-10V Motion Sensor with Daylight Harvesting and Remote Control Capability

NOTES:
1. In the event of a power failure, the troffer (end cap) will switch to emergency mode and operate the fixture for a maximum of 90 minutes.

Phone: 1-800-555-5629 | Fax: 973-244-7333 | Web: www.maxlite.com | E-mail: info@maxlite.com MAX15123 MaxLite
Revised 04/12/18

© 2018 MaxLite®. All Rights Reserved.

INDIRECT TROFFER

InDirect Troffer Overview:

The MaxLite Indirect LED Troffer is a recessed luminaire which uses LEDs and high reflectance material to enable the architectural aesthetic with high performance. The design combines high efficiency LEDs with a high performance reflective material to emit a voluminous, efficient, visually comfortable light for use in today's most sophisticated room designs. The fixture ships standard with a 0-10V dimming electronic driver which provides smooth dimming down to 1% and is compatible with other 0-10V control systems. MaxLite also offers control devices such as motion sensors and photocells as well as compliance features such as Emergency Back-up solutions.



INDIRECT TROFFER

Model	Size	Wattage	Lumens
MLIT22D25xx	2' x 2'	25	3,200
MLIT24D32xx	2' x 4'	32	4,500



PROJECT NAME: _____ CATALOG NUMBER: _____
 NOTES: _____ FIXTURE SCHEDULE: _____ Page: 1 of 2

Indirect Troffer
MLIT SERIES



PRODUCT DESCRIPTION:
 The MaxLite Indirect LED Troffer is a recessed luminaire which uses LEDs and high reflectance material to enable the architectural aesthetic with high performance. The design combines high efficiency LEDs with a high performance reflective material to emit a voluminous, efficient, visually comfortable light for use in today's most sophisticated room designs. The fixture ships standard with a 0-10V dimming electronic driver which provides smooth dimming down to 1% and is compatible with other 0-10V control systems. MaxLite also offers control devices such as motion sensors and photocells as well as compliance features such as Emergency Back-up solutions.

FEATURES:

- Visually pleasing indirect lighting
- > 150 LPW performance
- Fits standard grid applications; flange kit available for hard ceilings
- 0-10V dimming control
- White finish
- CRI: ≥80
- Available in 2X2, 2X4

APPLICATION
 MaxLite's Indirect Troffer is the ideal energy-efficient solution for design driven fixtures in offices, schools, hospitality, healthcare, and other commercial applications where appearance and performance matter.

MODEL SELECTION (Full list of order codes on pg. 2) Typical Order example: MLIT24D3225EM

MLIT	FAMILY	SIZE	DIMMING	WATTAGE (NOMINAL)	CCT	OPTIONS
MLIT+	Indirect Troffer	22+ 2'x2' 24+ 2'x4'	D+ Dimming	25+ 25W 32+ 32W	35+ 3500K 40+ 4000K	(OMIT) = None EM = Battery Backup Unit MS = Motion Sensor EMMS = Battery Backup and Motion Sensor

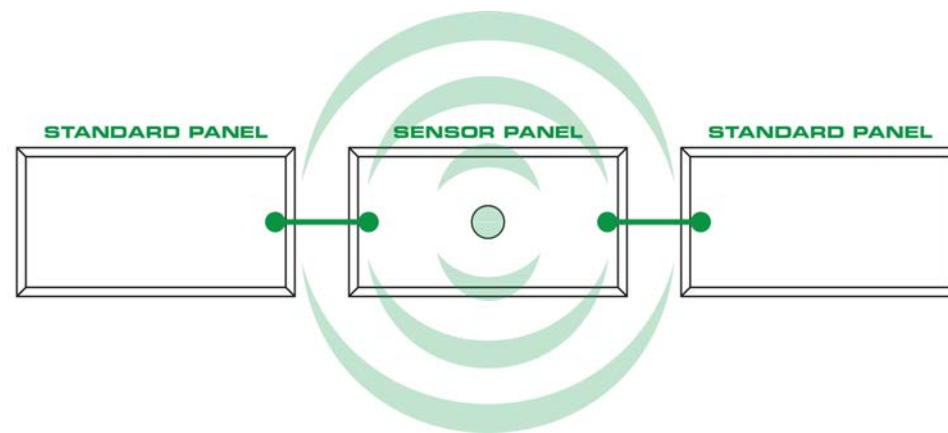


Phone: 1-800-555-5629 | Fax: 973-244-7333 | Web: www.maxlite.com | E-mail: info@maxlite.com
 MAX17169 Revised 09-10-16

CONTROLS

FLATMAX FLAT PANELS, ARCMAX VOLUMETRIC TROFFER, AND INDIRECT TROFFER ALL OFFER AN INTEGRATED MOTION SENSOR OPTION

- Microwave sensor is placed behind the lens to give a sleek appearance without limiting functionality
- Multiple standard fixtures can be controlled via one motion sensor fixture.
 - Connecting power and 0-10V dimming wires between panels allows one sensor to control several panels
- Maximum number of interconnected panels determined by amperage of the fixtures
 - 120Vac → Max 400VA
 - 277Vac → Max 1000VA
- Alternatively, FlatMax Flat Panels, ArcMax Volumetric Troffer, and Indirect Troffer are compatible with MaxLite's IntelliMax wireless controls system



Retrofit Kits

MaxLite has a retrofit fixture for every application. Next we'll review our Lensed Retrofit Kit and Troffer Retrofit Kits.



Lensed Retrofit Kit



Troffer Retrofit Kits

LENSED RETROFIT KIT

LRK Overview:

The LED Lensed Retrofit Kit (LRK) installs into existing troffers without the need to enter the ceiling space, giving facility managers the quickest, most cost effective means of replacing outdated fluorescent lighting systems with the high efficiency and performance of LEDs. With a profile measuring less than three inches in depth, the LRK fits standard 2-by-2 and 2-by-4-foot troffers with ease. In most cases, installation of the LRK takes less than 10 minutes.



LENSED RETROFIT KIT

Model	Size	Wattage	Lumens
LRK22D30xx	2' x 2'	30	3,000
LRK24D40xx	2' x 4'	40	4,200



PROJECT NAME: _____ CATALOG NUMBER: _____

NOTES: _____ FIXTURE SCHEDULE: _____

Page: 1 of 2

LED LENSED RETROFIT KIT
LRK SERIES

PRODUCT DESCRIPTION:
MaxLite's innovative Lensed retrofit kit offers an economical solution to upgrade existing fixtures to LED technology and can be retrofitted into most existing troffers in just about 10 minutes. The edge-lit LED light source emanates the perfect ambience into the environment.

FEATURES:

- Quick Installation of Lensed Retrofit Kit in existing luminaire without the need to break the ceiling plenum.
- Edge-Lit LED light source provides evenly distributed, high quality light.
- True to Life Color Rendering CRI >80
- Custom CCTs available upon request, please contact your MaxLite sales representative for quotations

CONSTRUCTION:

- Galvanized steel body
- Reflective white finish improves retrofit efficacy
- Standard Dimension for 2x4 & 2x2 Retrofits

CONTROL:
Compatible with standard 0-10v dimming controls

FORM AND FIT:
MaxLite recommends that a product sample is tested before projects begin to check fit of the retrofit kit. The retrofit kit is designed to fit into most preexisting troffers (lensed and parabolic).

MODEL SELECTION (if all list of order codes on pg. 2)		Typical order example: LRK24D3000			
LRK	SIZE	D	WATTAGE	CCT	OPTIONS
FAMILY	SIZE	DIMMABLE			
LRK= LED Lensed Retrofit Kit	22= 2'x2'	D= Dimming (0-10V)	30= 30W	35= 3500K	JOMT= None
	24= 2'x4'			41= 4100K	
				50= 5000K	
			40= 40W		

NOTES:
1. In the event of a power failure, the battery backup unit switches to emergency mode and operates the fixture for a maximum of 90 minutes.

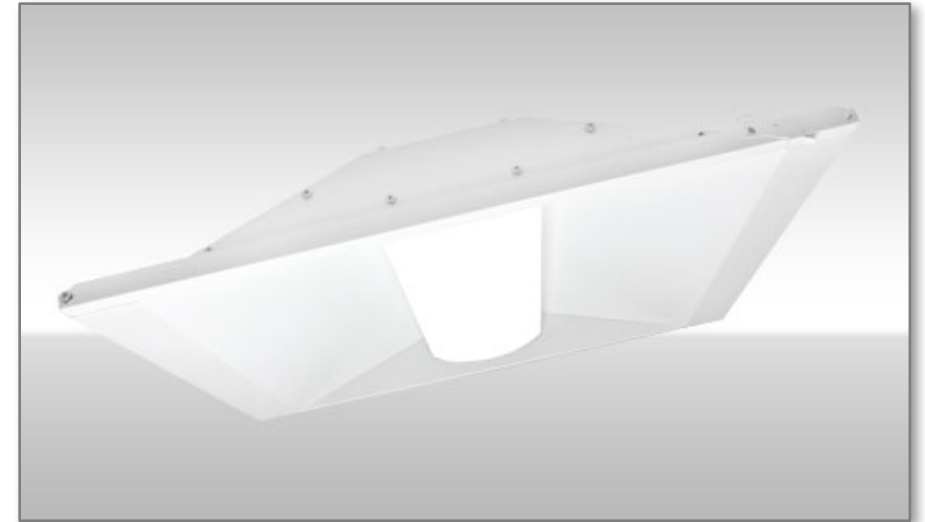
Phone: 1-800-555-5629 | Fax: 973-244-7333 | Web: www.maxlite.com | E-mail: info@maxlite.com

MAX15081 Revised: 08-14-17

TROFFER RETROFIT KIT

TRK Overview:

MaxLite's innovative Troffer Retrofit Kit offers an economical solution to upgrade existing fixtures to LED technology. The Troffer Retrofit kit can be retrofitted into most existing troffers in less than 15 minutes. Optional trim lend a clean aesthetic to the installed fixture.



TROFFER RETROFIT KIT

Model	Size	Wattage	Lumens
TRK22D23xx	2' x 2'	23	3,000
TRK24D33xx	2' x 4'	33	4,150

*3-pc with optional trim pieces to cover any gaps



PROJECT NAME: _____ CATALOG NUMBER: _____

NOTES: _____ FIXTURE SCHEDULE: _____

Page 1 of 2

LED TROFFER RETROFIT KIT
TRK SERIES

2x2'

PRODUCT DESCRIPTION:
MaxLite's innovative Troffer Retrofit Kit offers an economical solution to upgrade existing fixtures to LED technology. The Troffer Retrofit Kit can be retrofitted into most existing troffers in under 15 minutes. Optional trim plates can be included and are a great way to give a "clean" look to the installed fixture.

FEATURES:

- Quick installation of Troffer Retrofit Kit in existing luminaires without the need to break the ceiling plenum
- CRI >80
- 3500K, 4000K, and 5000K
- 5 year limited warranty

CONSTRUCTION:

- Galvanized steel body
- Reflective white finish
- Standard Dimension for 2x4 & 2x2 Retrofits

CONTROL:
Compatible with standard 0-10V dimming controls

FORM AND FIT:
MaxLite recommends that a product sample is tested before projects begin to check fit of the retrofit kit. The retrofit kit is designed to fit into most preexisting troffers (lensed and parabolic).

MODEL SELECTION Typical order example: TRK24D2340

TRK	SIZE	D	WATTAGE	CCT
FAMILY	SIZE	DIMMABLE	WATTAGE	CCT
TRK= LED Troffer Retrofit Kit	22= 2'x2' 24= 2'x4'	D= Dimming (0-10V)	23= 23W 33= 33W	35= 3500K 40= 4000K 50= 5000K

Phone: 1-800-555-5629 | Fax: 973-244-7333 | Web: www.maxlite.com | E-mail: info@maxlite.com Revised: 07/02/18

PENDANTS



- MLRP24E40xxD / MLRP24E40x
- 24" Round Edge Lit Pendant
- 36W
- Direct or Direct / Indirect
- White diffuser, white finish



- MLFP14DI36xxI
- 1X4 Edge Lit Pendant
- 40W
- Direct or Direct / Indirect
- White or clear diffuser, white finish



MAXLITE UNIVERSITY

The MaxLite University Lighting Degree program offers three comprehensive courses in lighting fundamentals, ranging from beginner to advanced learning. It's free and eligible for the following continuing education units from the American Lighting Association:

- **Lighting Fundamentals - ALA: 4 CLC Credit Hours**
- **Lighting Fundamentals (Intermediate) - ALA: 2 CLC Credit Hours**
- **Lighting Fundamentals (Advanced) – ALA: 3 CLC Credit Hours**

Welcome to
MaxLite
UNIVERSITY

for Lighting
and Technology

[Click Here To Get Started](#)

The department function is to train and provide product training material for all MaxLite representatives, customers and employees. The goal of the department is to educate the staff and rep network to a full and complete understanding of our products, technologies, marketplace, and business environments. We endeavor to educate how and why lighting functions, repair and replacement, as well as compare to competitors or listing requirements. We will accomplish this by providing the tools and services proactively and as needed to supplement.

STAY UPDATED – SUBSCRIBE!

Stay updated and subscribe to:

- MaxLite Minute Newsletter
- Product Announcements
- Press Releases
- Webinars

Click the “Subscribe To MaxLite” Button at the bottom of MaxLite’s website or visit:

<http://www.maxlite.com/subscribe>



MAXLITE ON SOCIAL MEDIA

Follow & Share MaxLite On Social Media

- LinkedIn
- Facebook
- Twitter
- YouTube



THANKS FOR ATTENDING!

QUESTIONS/ANSWERS

Thank you everyone for your attention! Please feel free to use this opportunity to ask any questions you may have about MaxLite or the products shown in this presentation.

FOR MORE INFORMATION ABOUT OTHER MAXLITE PRODUCTS, OR FOR LIGHTING QUESTIONS IN GENERAL; PLEASE CONTACT:

info@maxlite.com

<http://www.maxlite.com>

1-800-555-5629

