

WELCOME COMMERCIAL & RESIDENTIAL LED RECESSED CANS & RETROFITS

May 30, 2013 Webinar

- Residential & Commercial Recessed Can Retrofit Kits
- Residential 5/6" retrofits
- Residential 4" retrofits
- Commercial 6, 7,8,9 &10" Retrofits
- Market Data

Basic Specs:

- 120-277V Universal Power Supply.
- High lumen transmission and diffusing for even illumination.
- White paint finish is standard.
- 10-100% dimmable at 120V only.
- Driver features power factor of $>.90$, THD of <20 percent and has integral thermal protection to sense high temperature or internal failure.
- Driver mounts externally to the module, allowing for future replacement if needed.
- Suitable for damp and wet locations
- Supplied with E26 base adapter
- Virtually no UV emitted.



Residential Recessed Retrofit 5/6"

Construction:

- 6" LED Downlight Retrofit Fixture is ROHS Compliant.
- Durable die-casting aluminum heatsink with integrated trim in one piece.
- Module construction includes LEDs, heatsink, lens and baffle trim.
- Impact-resistant plastic lens.
- Fits most 5" and 6" recessed cans with torsion spring ('C' shaped) brackets.

Watts	Order Number	Model Number	Inc. Equivalent	Lumens	CRI	Lamp Life (Hrs.)	Dimensions Dia" x H"	CCT
14	71775	RR61430W*	90W	900	85	50,000	7.25" X 3.87"	3000
14	71777	RR61450W	90W	1000	85	50,000	7.25" X 3.87"	5000

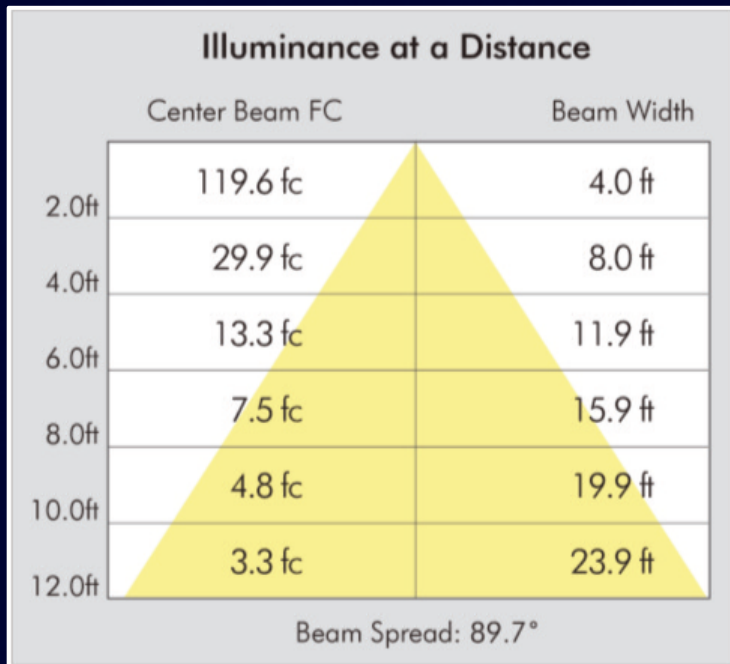
Residential Recessed Retrofit 5/6"

- RR614 is ETL listed for retrofit in the following 5" & 6" recessed housings:



Manufacturer	Model #s
Halo	H7ICAT, H7RICAT, H7ICT, H7RICT, H7ICATNB, H7ICTNB, H7T, H7RT, H7TNB, H7TCP, H7UICAT, H7UICAT, H27ICAT, H27RICAT, H27ICT, H27RICT, H27T, H27RT, H5ICAT, H5RICAT, H5T, H5RT, H25ICAT
All-Pro	500AT, EI500RAT, ET500, ET500R, EI700AT, EI700RAT, E700ATNB, EI700, EI700R, EI700ATNB, EI700NB, ET700, ET700R, EI700U, EI700UAT, E2700AT, EI2700, EI2700R, ET2700, ET2700R
Juno	IC22, IC22R, IC22W, IC22S, IC23, IC23W, IC21, IC21R, TC2, TC2R, IC20, IC20R, IC25, IC25R, IC25W, IC25S, TC20, TC20R
Capri	CR1, pr1, QL1, R9ASIC
Lithonia	L7X, L7XP
Thomas	PS1, R9ASIC/PS9RM
Prescolite	IBXS

Residential Recessed Retrofit 5/6"



LED
lighting facts[®]
MaxLite

A Program of the U.S. DOE

Light Output (Lumens)	920
Watts	13.09
Lumens per Watt (Efficacy)	70

Color Accuracy	87
Color Rendering Index (CRI)	

Light Color	3071 (Bright White)
Correlated Color Temperature (CCT)	

2700K
3000K
4500K
6500K

Warranty**	Yes
-------------------	------------

All results, except LED Lumen Maintenance, are according to IESNA LM-79-2008: Approved Method for the Electrical and Photometric Testing of Solid-State Lighting. The U.S. Department of Energy (DOE) verifies product test data and results.

** See www.lightingfacts.com/products for details.

Registration Number: WJP2-DTY77D (9/24/2012)
Model Number: RR61430W
Type: Recessed downlight

- ### 120V Approved Dimmers

 - Lutron: NovaT (Ntelv300 & 600)
Diva (Dvelv-300P & 303P)
 - Leviton: Acenti: Ate06-1Lw
Trimatron: 703W

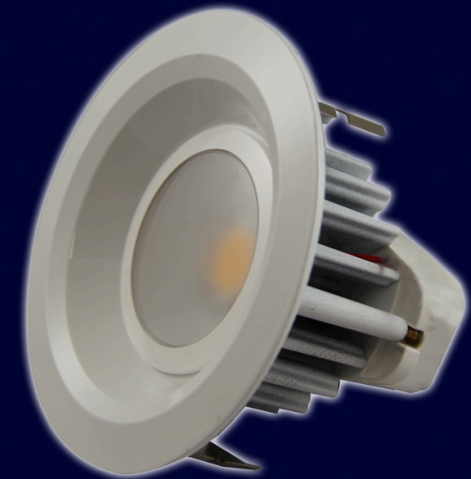
Consult tech. service or factory
for additional dimmers

The manufacturer has certified this product to the California Energy Commission in accordance with California law.

Residential Recessed Retrofit 4"

Basic Specs:

- 120-277V Universal Power Supply.
- High lumen transmission and diffusing for even illumination.
- Dimmable down to 10 percent.
- Driver power factor: $>.90$, THD $<20\%$ and has integral thermal protection to sense high temperature or internal failure.
- The driver mounts externally to the module, allowing future replacement if needed.
- Suitable for damp and wet locations.
- Supplied with an E26 base adapter.
- 90-degree beam angle.



Residential Recessed Retrofit 4"

Construction:

- Durable die-casting aluminum heatsink with integrated trim in one-piece.
- Module construction includes LED, heatsink, lens and baffle trim.
- Impact-resistant plastic lens.
- Installs into 4-inch cans using blade springs.

Watts	Order Number	Model Number	Inc. Equivalent	Lumens	CRI	Lamp Life (Hrs.)	Dimensions Dia"x H"	CCT
9	71778	RR40930W	50	500	80	50,000	5" x 3.5"	3000

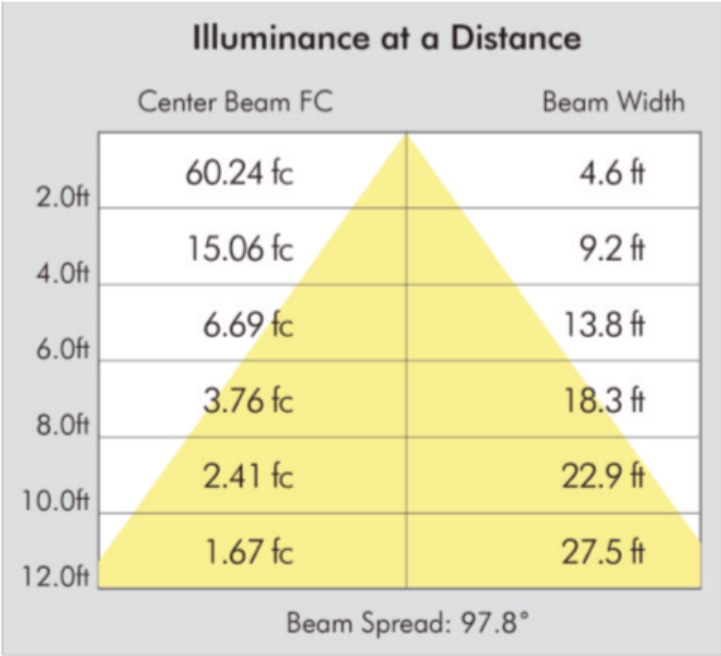
Residential Recessed Retrofit 4"

- RR409 is ETL listed for retrofit in the following 4" recessed housing's:



Manufacturer	Model #s
Halo	H99T, H99RT, H99ICT
All-Pro	ET400, ET400R, ET400RT
Juno	TC1, TC1R, IC1P
Capri	R4, RR4, R4ASIC
Lithonia	L3, L3R
Thomas	PS4, PS4RM, PS4ASIV

Residential Recessed Retrofit 4"



- 120V Approved Dimmers**
- Lutron: NovaT (Ntelv300 & 600)
Diva (Dvelv-300P & 303P)
 - Leviton: Acenti: Ate06-1Lw
Trimatron: 703W
- Consult tech. service or factory for additional dimmers

The manufacturer has certified this product to the California Energy Commission in accordance with California law.

Commercial Recessed Retrofit

Basic Specs:

- Universal voltage. (120-277V)
- Mounts using friction fit.
- cETL listed for damp location use.
- 4", 6" and 9" retrofits also available.
- CRI: > 80
- PF: > .9
- A wide variety of CCTs available: 3000K and 4000K come standard. 2700K and 5000K (contact MaxLite for quotations.)
- Five year limited warranty.
- Non-dimming only.



Commercial Recessed Retrofit

Construction:

- ROHS Compliant.
- Supplied with a heavy gauge anodized aluminum reflector in a haze finish.
- External driver for easy retrofit and maintenance.
- Power supply features integral thermal protection.

Watts	Order Number	Model Number	Lumens	Lamp Life (Hrs.)	Dimensions Dia" x H"	CCT
26	72236	RR82630W	1500	50,000	8.12" X 8.31"	3000
26	72237	RR82640W	1500	50,000	8.12" X 8.31"	4000
34	72238	RR83430W	1900	50,000	8.12" X 8.31"	3000
34	72239	RR83440W	1900	50,000	8.12" X 8.31"	4000

Commercial Recessed Retrofit

Basic Specs:

- Three wattages: 26, 34 & coming soon 43W.
- Non dimming – Gen2 dimming 0-10V coming in 3rd Qtr.
- 3000K & 4000K available.
- 4", 6", 8" & 9"
- 7" & 10" on request.
- 4" 26 Watt.
- 6" & 7" 26W and 34W.
- 8" and up all wattages.
- Non IC only
- Energy Star – In one month.
- $\frac{3}{4}$ " trim ring standard and 1.25" goof ring option.
- Lighting Facts – In one month.
- Architectural trim options available.



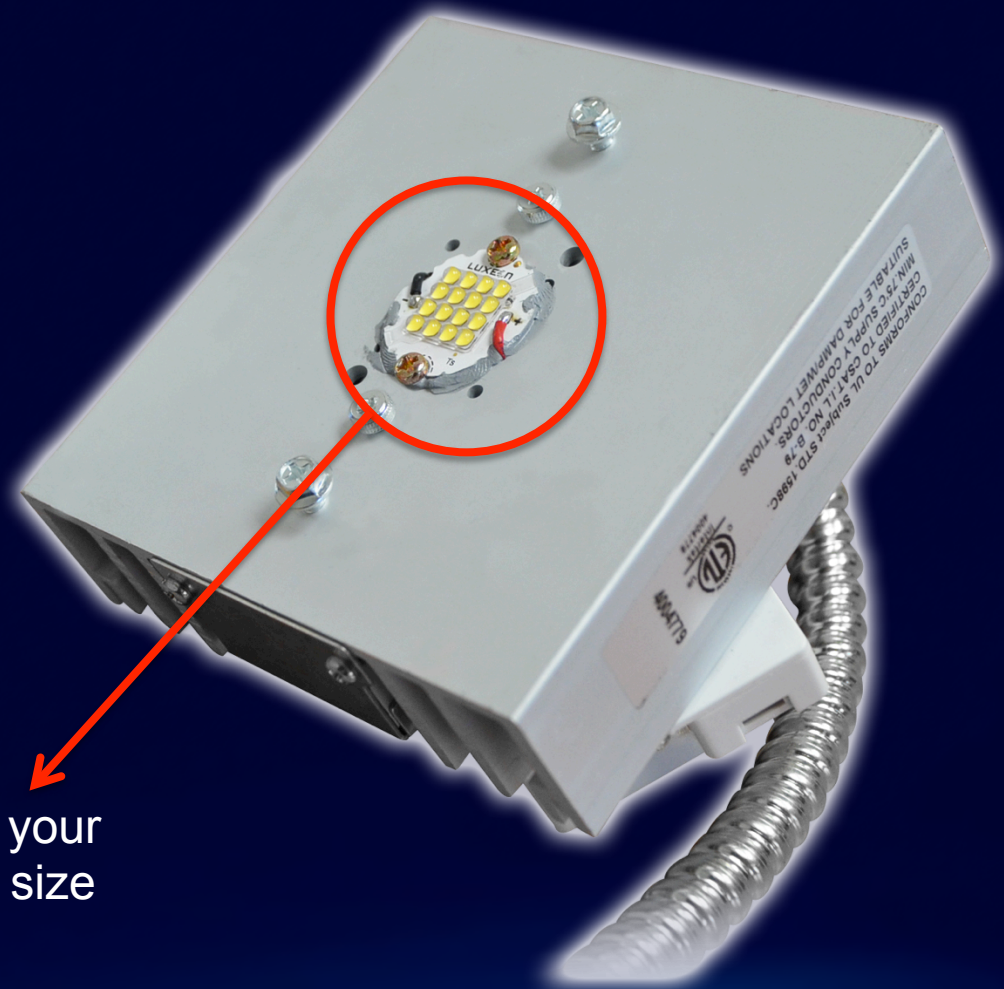
Commercial Recessed Retrofit

Basic Specs:

- 26, 34 & coming soon 43W.
- 4", 6", 8" & 9"
- 7" & 10" on request.

Max Wattages:

- 4" 26 Watt.
- 6" & 7" 26W and 34W.
- 8" and up all wattages.



Choose your
wattage size

Commercial Recessed Retrofit

Basic Specs:

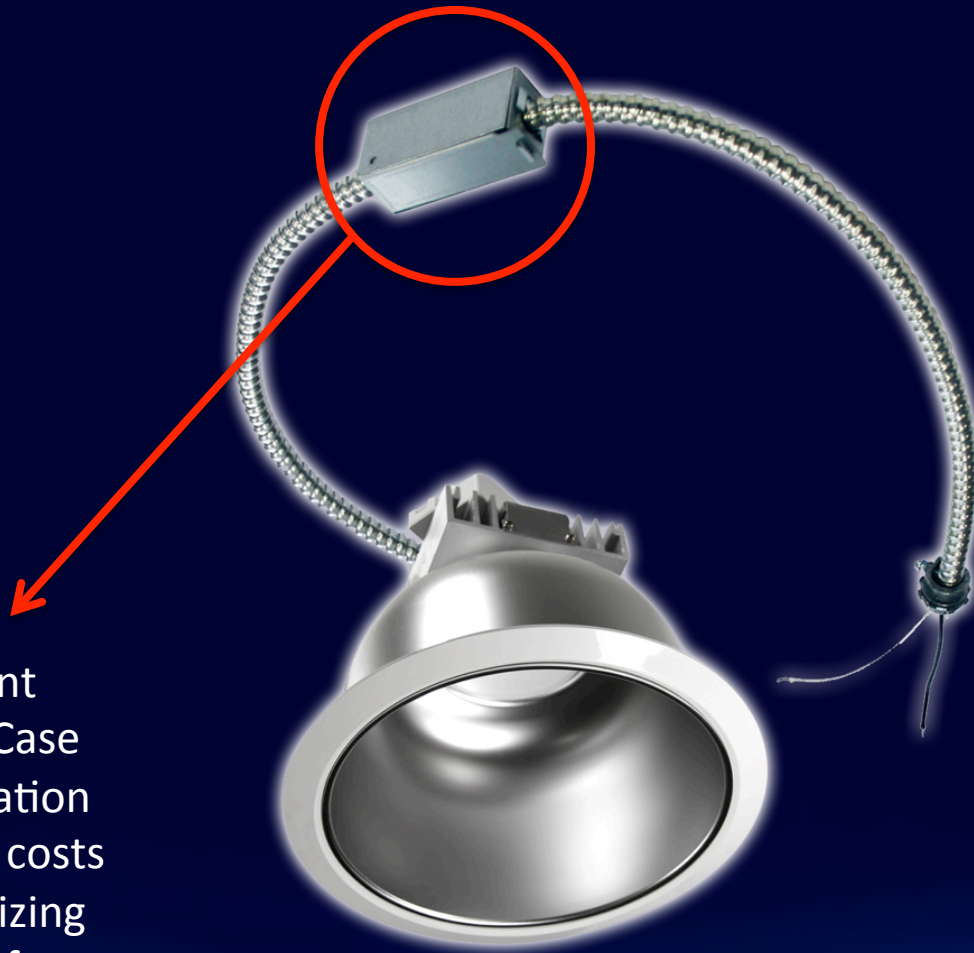
- 26, 34 & coming soon 43W.
- 4", 6", 8" & 9"
- 7" & 10" on request.

Max Wattages:

- 4" 26 Watt.
- 6" & 7" 26W and 34W.
- 8" and up all wattages.



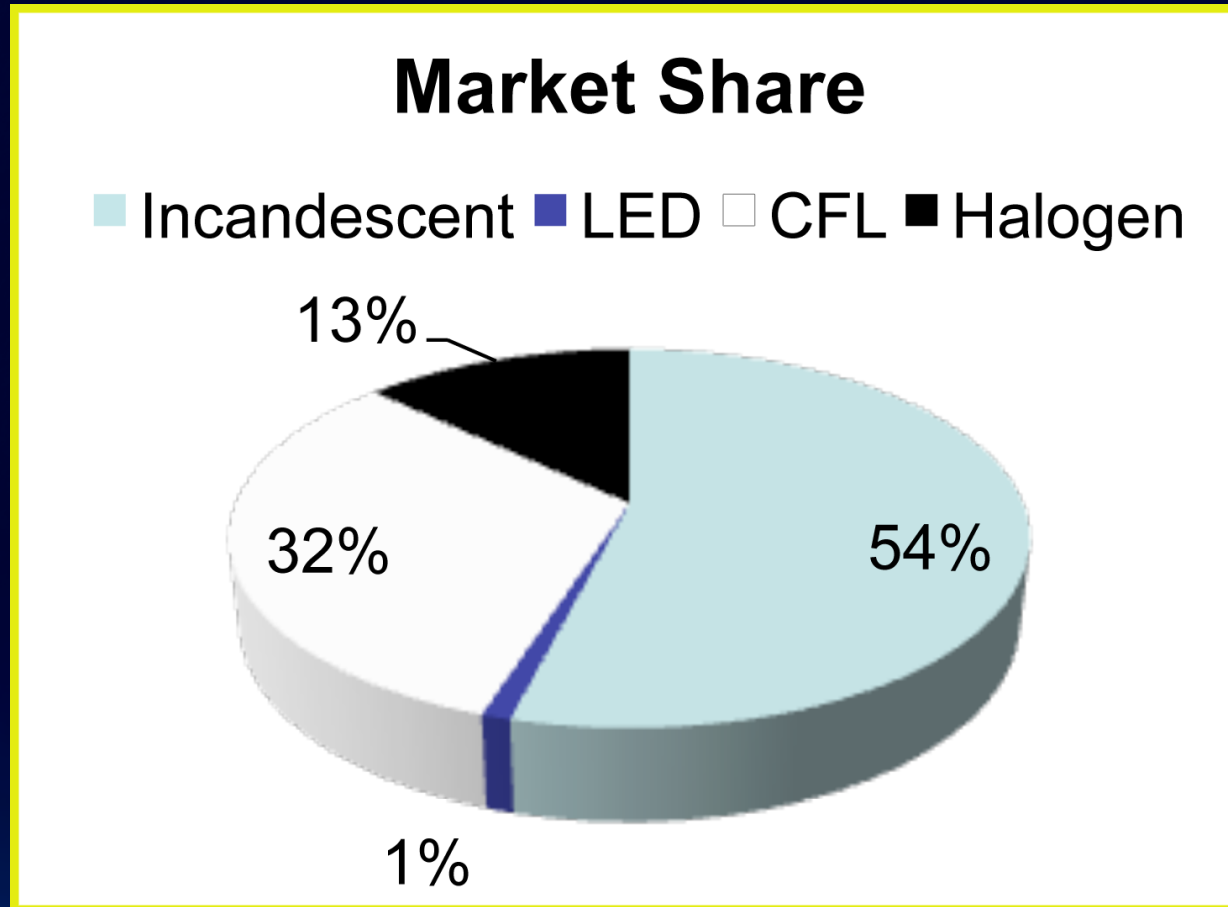
Commercial Recessed Retrofit



MaxLite's patent pending Snap-Case reduces installation time and labor costs thereby minimizing the ROI period for your customers.

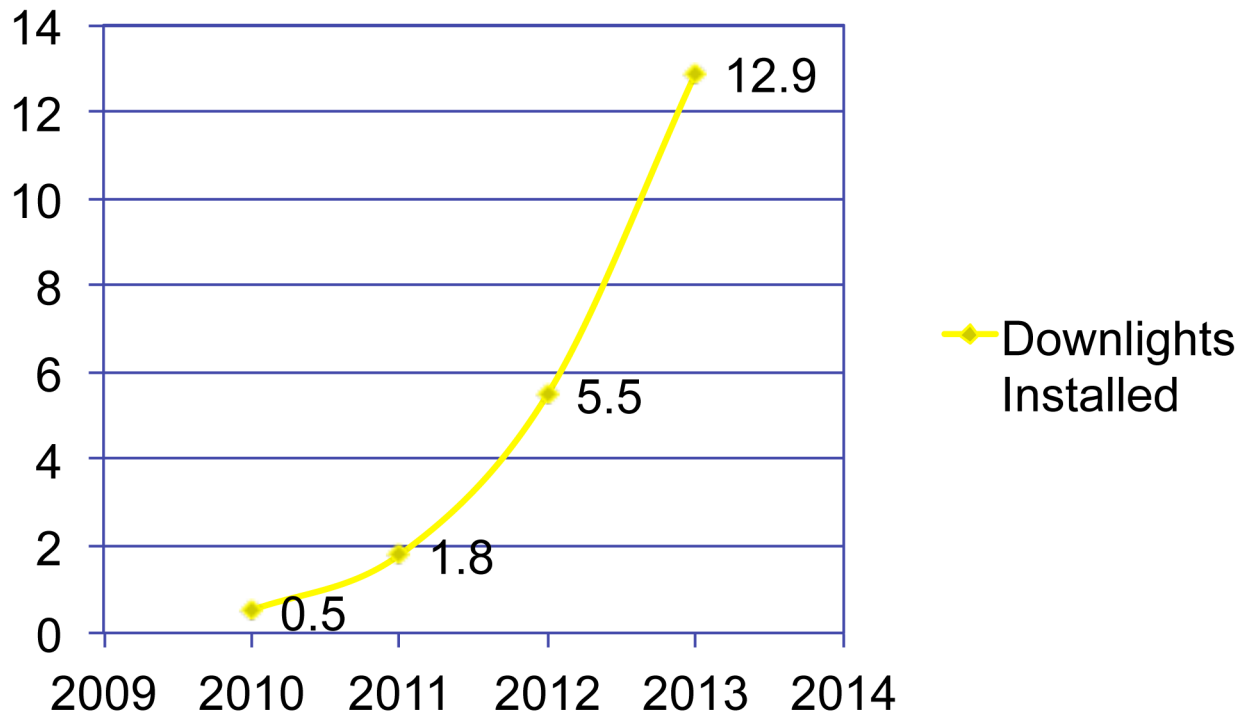


Down Lighting Market Composition



LED Down Lighting Market Growth

Downlights Installed (in M)



Based on data from the DOE we can project that at a minimum an additional 7.4M LED down lights will be installed in the US market during 2013.

MaxLite Webinars

MaxLite has been hosting free webinars once per month on a variety of topics since 2010. A lot of great content has been presented, here's how to find it:

- To browse previous MaxLite Webinars, visit: <http://www.maxlite.com/webinar>
- Check/Subscribe to our YouTube channel

Class Is In Session! 24/7

- Visit the MaxLite Lighting & Technology University at: <http://university.maxlite.com> to learn about all of MaxLite's products and gain access to many other lighting resources!



Thanks For Attending!

QUESTIONS & ANSWERS:

Thank you everyone for your attention.

This webinar session will be left open for the next 10 minutes to allow time for questions. We will answer as many questions as we have time for right now, but ALL questions will be answered via e-mail within the next 24 hours.

Thanks again for attending, and we hope to speak to you again, soon!

FOR MORE INFORMATION ABOUT OTHER MAXLITE PRODUCTS; OR FOR LIGHTING QUESTIONS IN GENERAL; PLEASE CONTACT:

info@maxlite.com

www.maxlite.com

1-800-555-5629

Or contact your MaxLite Representative or MaxLite's Regional Sales Manager.