



WELCOME

LED T8 LAMP READY FIXTURES

5/28/15 Webinar

Presented by: Bill Fenimore



MAXLITE PRESENTS: LED T8 LAMP READY FIXTURES

Topics:

- Why LED?
- UL Listing
- MaxLite's Lamp Ready Fixture Series
- Utility Strip - Product Specifications
- High Bays - Product Specifications
- Vapor Tight - Product Specifications
- Which LED T8 lamp should I use?
- Applications
- MaxLite Services
- Q&A



MAXLITE PRESENTS: BENEFITS OF LED T8 LAMP READY FIXTURES

Designed to create a complete UL-listed fixture by the most economical means, MaxLite offers the lamp ready series as a companion to our internal driver LED Linear T8 replacement lamps. The fixtures allow installers to avoid bypassing the ballast and adopt the energy-saving benefits of LED technology while keeping the product UL listing intact. Join us on Thursday May 28 at 12pm EST to learn more!



JOIN US TO LEARN MORE!



Thurs, May 28 at 12pm EST

To register click the "REGISTER NOW" button below

REGISTER NOW

Find us on:





Why LED?



LEDs offer a number of advantages over traditional light sources.

LEDs...

- Offer 80% energy savings over incandescents.
- Contain no mercury, lead or other hazardous materials.
- Turn on instantly.
- Are dimmable.
- Last up to 100,000 hours (100 times more than an incandescent!).
- Do not emit ultraviolet or infrared rays during operation.
- Operate cooler.
- Do not burn out (they become dimmer after their lifetime).

LED PRODUCTS

View our Product Library for a complete list of LED indoor and outdoor lamps and luminaires.

[Click Here](#)

WHAT ARE LED T8 LAMP READY FIXTURES?

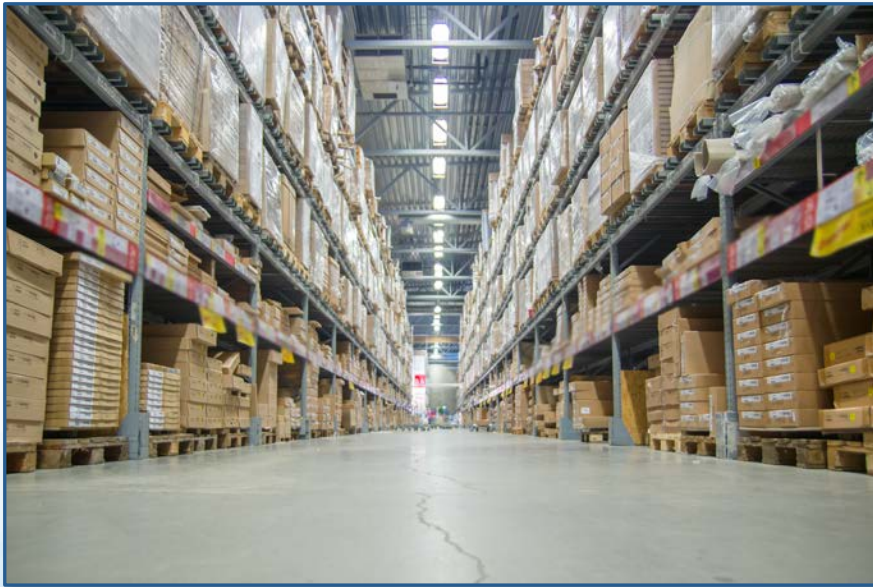
- MaxLite's Lamp Ready series of fixtures is a value-driven solution to enable installers to maintain UL product listing while upgrading to LED.
- In addition to simplifying the upgrade process for the contractor, the fixtures offer ease of maintenance and peace of mind for the end-user.



UL LISTING? NO PROBLEM!

Contractors are often faced with fluorescent fixtures of varying ages and conditions on a job that must be either modified, or replaced, to comply to UL and building code standards.

We found that many MROs were **avoiding the adoption of LED T8 lamps because they were uncertain whether bypassing a ballast keeps the original UL product listing intact.** Our new Lamp Ready Series was designed to remove that barrier by introducing a low-cost, complete fixture solution that is an easy choice over a modified fluorescent fixture that may not be UL-listed for LED use.



UL LISTED

- The Lamp Ready series was developed in response to a strong market demand for a **new construction housing that is UL-listed specifically for LED replacements lamps that do not need a ballast.**
- **The UL certification mark indicates the product has been tested to meet globally accepted standards of product safety set forth by Underwriters Laboratories,** in pairing an internally driven LED lamp with a dedicated new construction housing.
- These fixtures offer **ease of maintenance for the end-user,** who is able to re-lamp the housings with MaxLite brand LED T8 lamps with the certainty that everything is still UL listed.



LAMP READY FIXTURE SERIES:

LED T8 Lamp Ready Fixtures



Overview:

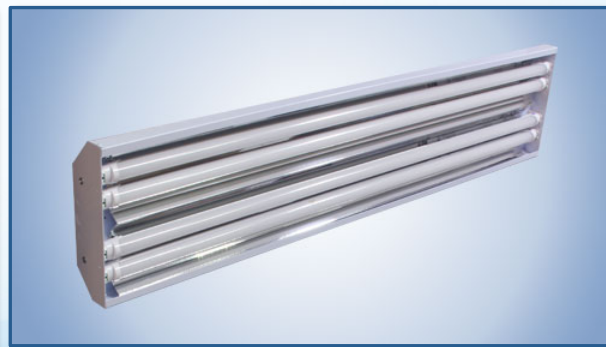
Designed to create a complete UL-listed fixture by the most economical means, MaxLite offers the lamp ready series as a companion to our internal driver LED Linear T8 replacement lamps. The fixtures allow installers to avoid bypassing the ballast and adopt the energy-saving benefits of LED technology while keeping the product UL listing intact. The series includes Vapor Tight, Utility Strip and Linear Highbay fixtures, with more models to come.

Works with [LED Linear T8 - Internal Driver](#)

Validations & Accolades:



● Lamp Ready Linear Utility Strips



● Lamp Ready Linear Highbay




● Lamp Ready Vapor Tight

LAMP READY LINEAR UTILITY STRIPS

MaxLite's **Lamp Ready Utility Strip** provides distributors, contractors, and buyers with UL listed fixtures **designed specifically for LED T8 lamps**. These fixtures are verified for use in task, general lighting, assembly, warehouse, and other general lighting applications.

- Designed for LED single ended lamps
- 24 gauge steel damp-rated housing
- Maximum photometric efficiency with directional lamps
- Cable kit mounting accessory available
- Key hole slots at rear for surface mounting
- Knockouts for motion sensor mounting
- 5-year warranty




PROJECT NAME: _____ CATALOG NUMBER: _____

NOTES: _____ FIXTURE SCHEDULE: _____

Page: 1 of 2

LAMP READY LINEAR UTILITY STRIP

LSS SERIES



LSS1XT8USE4802 Model

PRODUCT DESCRIPTION:

The MaxLite T8 LED "Lamp Ready" linear Utility Strip provides distributors, contractors, and buyers with a UL listed fixtures designed specifically for LED T8 lamps. These Linear Utility Strips are constructed of the same durable materials as commercial industrial grade fluorescent versions. These fixtures support competitive light output when used with MaxLite brand T8 LED single ended lamps. These fixtures are verified for use in task, general lighting, assembly, warehouse, and other general lighting applications

FEATURES:

- Lamps not included
- Designed for LED Single Ended lamps – lamps sold separately
- Maximum Photometric Efficiency with directional lamps
- Wire Tie tabs std. with fixture. Cable kit mounting accessory available
- Key Hole slots at rear for surface mounting
- Knockouts on each end for motion sensor mounting
- 5-Year Warranty

CONSTRUCTION:

- 24 Gauge Steel, white post painted baked on enamel.
- Damp rated housings
- Supplied with ONLY Non-Shunted sockets and Single ended wiring configurations. For questions contact MaxLite
- 600V rated UL Listed sockets

CONTROL:

- Optional Occupancy sensor available* (on/off)

| HIGHLIGHTS |
|--|
| 100% Digital PIR (Passive Infrared) Detection – on/off function |
| Can adjust sensitivity of PIR Detector (30% to 100%) |
| 15-20 ft (4.57-6.10 m), 360° Radial Coverage Pattern, Covers up to 450 sq.ft |
| Self-Contained Relay, No Power Pack Needed |
| Interchangeable Hot & Load Wires |
| Adjustable Time Delay from 15 seconds to 30 minutes |
| No Field Calibration or Sensitivity Adjustments Required |

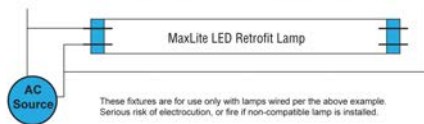
| ORDERING INFORMATION | | | |
|----------------------|-----------------|--|---------------------------|
| ORDER NUMBER | MODEL | DESCRIPTION | DIMENSIONS (L" x W" x H") |
| 75302 | LSS1XT8USE4802* | UTILITY STRIP LAMP READY 1XT8 LED 120-277V SINGLE ENDED 48L X 2W | 48" x 2" x 3" |
| 75303 | LSS2XT8USE4803* | UTILITY STRIP LAMP READY 2XT8 LED 120-277V SINGLE ENDED 48L X 3W | |

NOTES:

1. This product is specifically engineered and listed for use with MaxLite Single Ended conductor LED lamps. Maximum lamp wattages cannot exceed stated levels without voiding warranty. Use with any other branded lamps should be confirmed by a qualified electrician prior to use.

2. *For ordering Occupancy sensor, add "MSO" suffix to model number

IMPORTANT WARNING:



These fixtures are for use only with lamps wired per the above example. Serious risk of electrocution, or fire if non-compatible lamp is installed.

Phone: 1-800-555-5629 | Fax: 973-244-7333 | Web: www.maxlite.com | E-mail: info@maxlite.com

MAX15056 Revised: 04-24-15 MAXLITE

LED T8 LAMP READY HIGHBAY

MaxLite's LED T8 Lamp Ready linear Highbay provides distributors, contractors, and buyers with a UL listed fixtures **designed specifically for LED T8 lamps**. These fixtures are verified for use in Highbay, Lowbay, assembly, warehouse, and other general lighting applications.

- 4, 6 and 8 lamp models - designed for LED single ended lamps
- 22 gauge galvanized steel damp-rated housing
- High polish reflector - 86% enhanced
- Maximum photometric efficiency with directional lamps
- Up to 30 ft mounting height (cable kit mounting accessory available)
- Hinged door for emergency backup ballast access
- Optional occupancy sensor available
- 10-year warranty

PROJECT NAME: _____ CATALOG NUMBER: _____

NOTES: _____ FIXTURE SCHEDULE: _____

Page: 1 of 2

LED T8 LAMP READY HIGHBAY

BLHT SERIES

UL LISTED

RoHS Listed

PRODUCT DESCRIPTION:

The MaxLite T8 LED Lamp Ready linear Highbay provides distributors, contractors, and buyers with a UL listed fixtures designed specifically for LED T8 lamps. These Linear Highbay are constructed of the same durable materials as our Commercial Industrial grade fluorescent and LED PCB versions. These fixtures support competitive light output when used with MaxLite brand T8 LED single ended lamps. These fixtures are verified for use in Highbay, Lowbay, assembly, warehouse, and other general lighting applications

Caution: This product is specifically engineered and listed for use with MaxLite Single Ended conductor LED lamps. Maximum lamp wattages cannot exceed stated levels without voiding warranty. Use with any other branded lamps should be confirmed by a qualified electrician prior to use.

FEATURES:

- Lamps **not** included
- Designed for LED Single Ended lamps – Lamps supplied separately
- Maximum Photometric Efficiency with directional lamps
- V-Hooks std. with fixture, Cable kit mounting accessory available.
- Hinged Access Door for Emergency back up ballast** access (see options)
- 10-Year Warranty
- Knockouts on each end for motion sensor mounting

CONSTRUCTION:

- 22 Gauge Galvanized Steel, white post painted baked on enamel.
- High Polish Reflector – 86% enhanced
- Damp rated housings
- Supplied with ONLY Non-Shunted sockets and Single ended wiring configurations. For questions contact MaxLite
- Fits current MaxLite Linear HB door, wire guard, and lens accessories

CONTROL:

- Optional Occupancy sensor available* (on/off)

| HIGHLIGHTS | |
|--|--|
| 100% Digital PIR (Passive Infrared) Detection – on/off function | |
| Can adjust sensitivity of PIR Detector (30% to 100%) | |
| Excellent Radio Frequency Immunity | |
| Up to 30 ft mounting height | |
| 15-20 ft (4.57-6.10 m), 360° Radial Coverage Pattern, Covers up to 450 sq ft | |
| Self-Contained Relay | |
| No Power Pack Needed | |
| Interchangeable Hot & Load Wires | |
| Impossible to Wire Backwards | |
| Adjustable Time Delay from 15 seconds to 30 minutes | |
| No Field Calibration or Sensitivity Adjustments Required | |
| No required Ground | |

| ORDERING INFORMATION | | | |
|----------------------|-----------------|----------------------------------|---------------------------|
| ORDER NUMBER | MODEL | DESCRIPTION | DIMENSIONS (L" x W" x H") |
| 75428 | BLHT4XT8USE4810 | 4 Lamp Linear Highbay Lamp Ready | 48 x 10 x 3 |
| 75429 | BLHT6XT8USE4815 | 6 Lamp Linear Highbay Lamp Ready | 48 x 15 x 3 |
| 75430 | BLHT8XT8USE4820 | 8 Lamp Linear Highbay Lamp Ready | 48 x 20 x 3 |

NOTES:

1. * For ordering Occupancy sensor, add "MSO" suffix to model number

Phone: 1-800-555-5629 | Fax: 973-244-7333 | Web: www.maxlite.com | E-mail: info@maxlite.com

MAX15040
Revised: 04-02-15

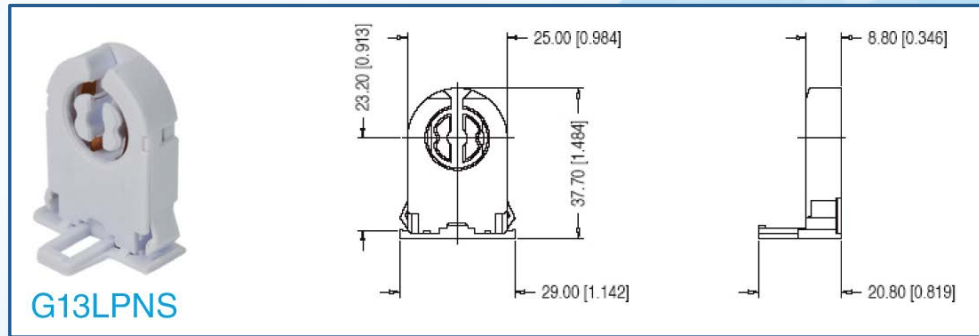
LED T8 LAMP READY HIGHBAY ACCESSORIES

MaxLite's current Linear Highbay door, wire guard and lens accessories **ARE COMPATIBLE** with the LED T8 Lamp Ready Highbay fixtures.



T8 & T5 HIGHBAY ACCESSORIES:

| ORDER CODE | ITEM NUMBER | DESCRIPTION |
|------------|--------------|--|
| 71827 | MLFHBL4DF | 4 lamp T8 door frame and lens |
| 71826 | MLFHBL6DF | 6 lamp T8 door frame and lens |
| 72053 | MLFHBL4DFWG | 4 lamp T8 door frame and wire guard |
| 72054 | MLFHBL6DFWG | 6 lamp T8 door frame and wire guard |
| 72049 | MLFHBL4DFWGL | 4 lamp T8 door frame, wire guard and lens |
| 72050 | MLFHBL6DFWGL | 6 lamp T8 door frame, wire guard and lens |
| 70224 | SKFHBLC120 | 120V 10' cord with plug |
| 70225 | SKFHBLC277 | 277V 10' cord with plug |
| 71415 | STD480-277-4 | 4 lamp T8 & T5 step down transformer (347-200V & 480-277V) |
| 71414 | STD480-277-6 | 6 lamp T8 & T5 step down transformer (347-200V & 480-277V) |
| 71119 | MLCHKSQ | Linear highbay cable hanging kit |
| 73978 | G13LPNS | G13 Low Profile Non-Shunted Lamp Holder |



LAMP READY VAPOR TIGHT SERIES

The MaxLite **Lamp Ready Vapor Tight** series provides Architects, Specifiers, and Buyers with a UL listed fixture. Offering classic IP65 ratings, with spec grade Stainless steel latches, these fixtures come pre-wired for single ended operating LED T8 lamps.

- Stainless steel spec grade clasps and clips
- Lead wires 7' for tandem wiring, no need for back and end knockouts
- Sockets wired in series via non-shunted sockets
- Ceiling or wall mounted. Surface mount brackets included
- Engineered and UL rated up to 22w per set of lamp holders
- Hermetically sealed for wet environments
- Sockets rated to 660w, 600v, UL Listed
- Indoor 5 year warranty / Exterior 3 year warranty

PROJECT NAME: _____ CATALOG NUMBER: _____

NOTES: _____ FIXTURE SCHEDULE: _____

Page: 1 of 2

LAMP READY VAPOR TIGHT LSV SERIES

Bump Listed

PRODUCT DESCRIPTION:
The MaxLite Lamp Ready Vapor tight series provides Architects, Specifiers, and Buyers with a UL listed fixture engineered to operate the latest single ended LED T8 lamps on the market. Offering classic IP65 ratings, with spec grade Stainless steel latches, these fixtures come pre-wired for single ended operating LED lamps for contractor ready installation as new or remodel fixtures.

FEATURES:

- **Lamps not included**
- Stainless Steel spec grade hasps and clips
- Lead wires are 7' for tandem wiring, eliminating back and end knockouts.
- Sockets are wired in series via non-shunted sockets
- Ceiling or wall mounted
- Surface mount brackets included

CONSTRUCTION:

- Engineered and UL rated to take up to 22w per set of lamp holders
- Pour in place silicone seal provides hermetically sealed envelope for wet environments
- Polycarbonate Grey Housing and clear lens standard.
- Wiring is 18 AWG solid to allow 120-277v operation where lamp specification allows
- Sockets rated to 660w , 600V, UL Listed

WARRANTY:

- Indoor 5 year warranty on parts, materials and workmanship
- Exterior 3 year warranty on parts, materials and workmanship

ORDERING INFORMATION

| ORDER NUMBER | MODEL | WATTS (NOMINAL) | DESCRIPTION | DIMENSIONS (L' x W' x H') |
|--------------|----------------|-----------------|---|---------------------------|
| 74850 | LSV2XT8USE4806 | 44W | Vapor Tight Lamp Ready 2xT8 LED 120-277v Single Ended | 50" x 6.2" x 3.9" |
| 74851 | LSV3XT8USE4806 | 66W | Vapor Tight Lamp Ready 3xT8 LED 120-277v Single Ended | |

ACCESSORIES

| ORDER CODE | MODEL NUMBER | DESCRIPTION |
|------------|--------------|---|
| 74139 | MLCHKLSV15 | Cable Kit 15' Loop x Loop 1 Pair |
| 73978 | G13LPNS | G13 Low Profile Non-Shunted Lamp Holder |

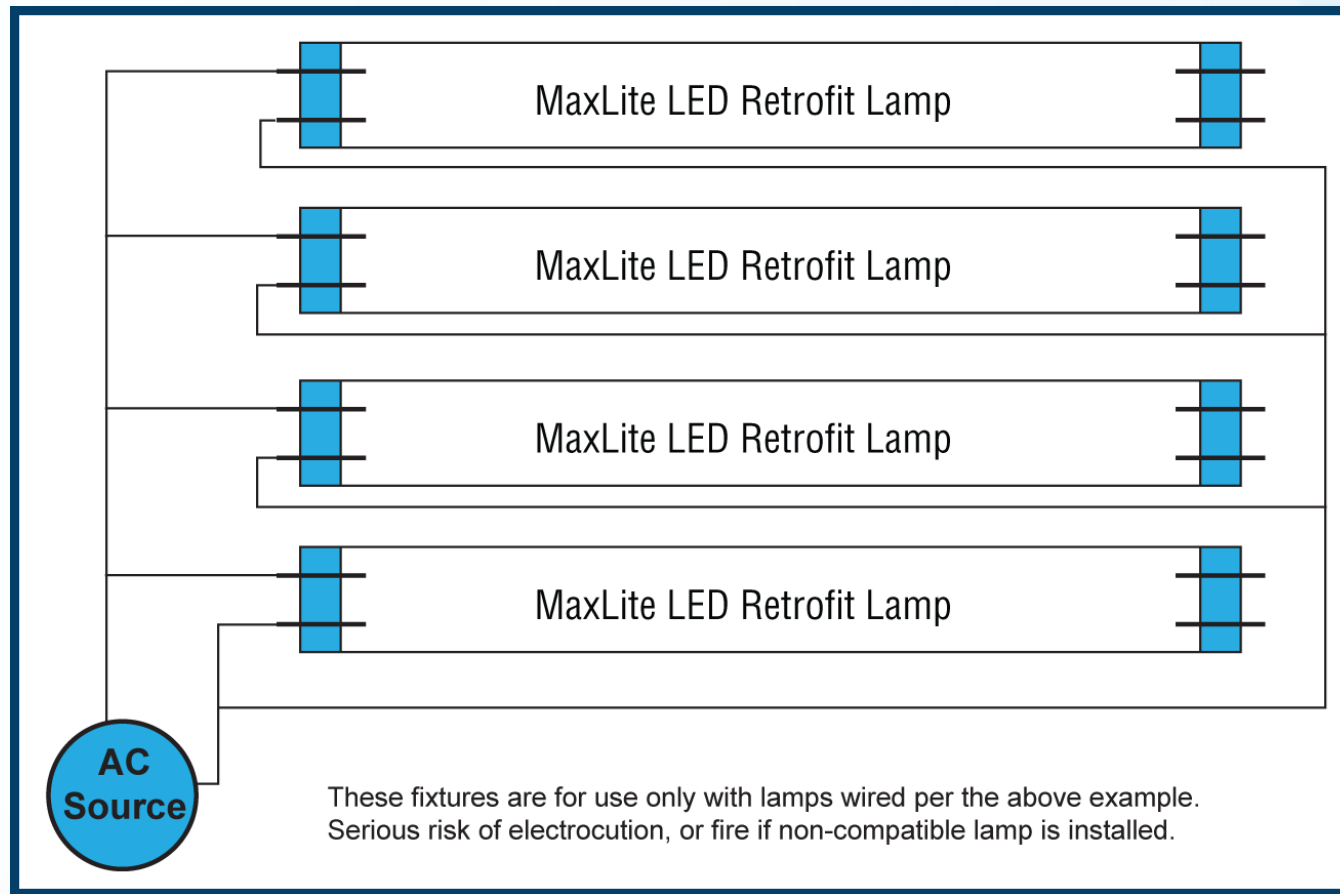
NOTES:

1. This product is specifically engineered and listed for use with MaxLite Single Ended conductor LED lamps. Maximum lamp wattages cannot exceed stated levels without voiding warranty. Use with any other branded lamps should be confirmed by a qualified electrician prior to use.

Phone: 1-800-555-5629 | Fax: 973-244-7333 | Web: www.maxlite.com | E-mail: info@maxlite.com

MAX15042
Revised: 03-09-15

LED T8 LAMPS – IMPORTANT WARNING



These fixtures are specifically engineered and listed for use with **MaxLite Single Ended conductor LED lamps**. Maximum lamp wattages cannot exceed stated levels without voiding warranty. Use with any other branded lamps should be confirmed by a qualified electrician prior to use.

WHICH LED T8 LAMP SHOULD BE USED WITH LAMP READY FIXTURES?



LED Linear T8 - External Driver

An LED F32 T8 lamp for all locations where four-foot fluorescent tubes are now used, the LED T8 consumes just 20 watts and is powered by either a one- or two-lamp driver configuration, allowing for one to six LED tube configurations within a typical troffer.



LED Linear T8 - Internal Driver

MaxLite's LED Linear T8 with internal driver replacement Lamps are the ideal energy saving choices when upgrading traditional linear T8 or T12 fluorescent lamps in fixtures containing standard non-shunted G13 (medium bi-pin) sockets.



LED Linear T8 - DirectFit

DirectFit LED T8 lamps make upgrading fluorescent fixtures to LED technology effortless. By using the existing ballast, these energy-saving replacement lamps install into linear fluorescent fixtures without any extra labor or re-wiring.

MaxLite's LED Linear T8 with internal driver replacement Lamps are the ideal energy saving choices when upgrading traditional linear T8 or T12 fluorescent lamps in fixtures containing standard non-shunted G13 (medium bi-pin) sockets. MaxLite LED T8 lamps can provide up to 44 percent in energy savings when compared to 32-watt fluorescent lamps.


LED T8 – Linear Replacement Lamp





- 2' & 4' lamps are DLC qualified
- Universal voltage: 120V-277V
- Color Rendering Index (CRI): ≥ 82
- 50,000 hour life
- High power factor: $\geq .90$
- Simple ballast bypass
- Instant on
- Mercury free and virtually no UV or IR light
- Non dimmable
- Suitable for enclosed fixture
- Five year limited warranty (10 Year optional)

PROJECT NAME: _____ CATALOG NUMBER: _____
 NOTES: _____ FIXTURE SCHEDULE: _____
 Page: 1 of 2

LED T8 - Linear Replacement Lamp

L SERIES




PRODUCT DESCRIPTION:
 MaxLite LED T8 Linear Replacement Lamps are the ideal energy saving choices when upgrading traditional linear T8 or T12 fluorescent lamps in fixtures containing standard G13 (medium bi-pin) sockets. The LED T8 lamps are designed to provide appropriate light levels while utilizing a dedicated internal driver and require non-shunted G13 medium bi-pin lamp holders.

FEATURES:


- 2' & 4' lamps are DesignLights Consortium® (DLC) qualified
- Universal voltage: 120V-277V applications
- Color Rendering Index (CRI): ≥ 82
- 50,000 hour life
- THD <20%
- High power factor: ≥ 90
- Easy retrofit into most common linear fluorescent fixtures
- Simple ballast bypass
- Instant on
- Mercury free and virtually no UV or IR light
- Non dimmable
- Suitable for enclosed fixture
- Five year limited warranty (10 Year optional)




Scan QR Code to view Installation Video
 or visit the following link: <http://bit.ly/T8InstallationVideo>

MODEL SELECTION (Full list of order codes on pg. 2) Typical order example: L18T8SE441

| L | T8 | SE | | | | |
|------------------|--------------------------|-------------|------------------|---------|-----------|----------------------------------|
| FAMILY | WATTAGE | LAMP TYPE | POWER CONNECTION | LENGTH | CCT | WARRANTY |
| L= LED Linear | 10= 10W (2FT & 3FT only) | T8= T8 tube | SE= Single end | 2= 2 FT | 35= 3500K | (OMIT)= 5 Years -10= 10 Years |
| | 15= 15W (4FT only) | | | 3= 3 FT | 41= 4100K | |
| | 18= 18W (4FT only) | | | 4= 4 FT | 50= 5000K | |
| | 22= 22W (4FT & 5FT only) | | | 5= 5 FT | 65= 6500K | |
| | 31= 31W (6FT only) | | | 6= 6 FT | | |

| ACCESSORIES | | | |
|-------------|--------------|---|---|
| ORDER CODE | MODEL NUMBER | DESCRIPTION | ACCESSORIES IMAGE |
| 73878 | G13LPS | G13 Low Profile Non-Shunted Lamp Holder |  |



Phone: 1-800-555-5629 | Fax: 973-244-7333 | Web: www.maxlite.com | E-mail: info@maxlite.com MAX14083 Revised: 12-01-14

LED T8 LAMP READY FIXTURE APPLICATIONS



University.MaxLite.com



MAXLITE LIGHTING & TECHNOLOGY UNIVERSITY



**Product Training
Modules**



**Earn Your
Lighting Degree**



**Other Lighting &
Technology Resources**

The department function is to train and provide product training material for all MaxLite representatives, customers and employees. The goal of the department is to educate the staff and rep network to a full and complete understanding of our products, technologies, marketplace, and business environments. We endeavor to educate how and why lighting functions, repair and replacement, as well as compare to competitors or listing requirements. We will accomplish this by providing the tools and services proactively and as needed to supplement.

[Click here to get started!](#)

Custom Product & Technology Training

Ask about our FREE custom webinar/training services!

- Lunch and Learn
- Breakfast and Learn
- Online via webinar
- Focus on a specific MaxLite product or a broad overview
- Focus on LED Technology or general lighting training
- Custom Presentations for your customers or staff



Email Bill Fenimore at bfenimore@maxlite.com for more info!

MAXLITE'S UTILITY REBATE SERVICES

MaxLite makes it easy to find and complete rebates for you and your customers!

- C&I Rebate Finder
- Utility Rebate Flyers
- Custom Rebate Calculator
- DLC / ENERGY STAR / LDL Product Listings
- Utility Rebate Paperwork Service



Email Joe Pater at jpater@maxlite.com for more info!

QUESTIONS/ANSWERS

Thank you everyone for your attention! Please feel free to use this opportunity to ask any questions you may have about MaxLite or the products/topics discussed in this presentation.

FOR MORE INFORMATION ABOUT OTHER MAXLITE PRODUCTS, OR FOR LIGHTING QUESTIONS IN GENERAL; PLEASE CONTACT:

info@maxlite.com

<http://www.maxlite.com>

1-800-555-5629