

# MaxLite®

A NEW WAVE OF LIGHT



## UPDATES TO DOWNLIGHTS PORTFOLIO JULY 26, 2018

## Agenda

- **Updates to Downlight Portfolio**
  - Starting downlight portfolio (Commercial)
  - Which commercial downlights will work best for my project?
  - Commercial downlight selection guide / Product overview
  - Residential downlight options / Product overview
- MaxLite University
- Subscribe
- Social Media
- Q&A



MaxLite Presents:

**Updates to Downlight Portfolio**

**Thursday, 7/26/18 @ 1pm EST**



MaxLite has a downlight for every application. From commercial to residential, there are a variety of options to choose from. Recent changes to the product line will make it easier to choose the right product for your application. We are improving some existing products, and introducing a new line with modular engines, reflectors and housings to meet both retrofit and fixture needs. Join us on Thurs. July 26 to learn more!





**Click Here To Register Now!**

 Add this webinar to your calendar  
(If prompted to OPEN or SAVE, choose OPEN)

## STARTING COMMERCIAL PRODUCT PORTFOLIO



Current Products



Phase Out: DLR, RR, RCF, RAF



## Commercial: Which downlights will work best for your project?

MaxLite has a downlight for every application. From commercial to residential, there are a variety of options to choose from. Recent changes to the product line will make it easier to choose the right product for your application. We are improving some existing products, and introducing a new line with modular engines, reflectors and housings to meet both retrofit and fixture needs.

### Commercial Downlights:



Universal Commercial Downlight  
Fixtures



ECO Series-Commercial  
Recessed Retrofit Downlight



Commercial Recessed  
Downlight Retrofits



**RCF**  
LED Universal Downlights



**RRECO**  
LED Commercial Downlight  
Retrofits Economical Series



**RRC**  
LED Commercial Downlight Retrofits

Retrofit?	Yes		Yes		Yes			
Fixture?	Yes		Yes w/ frame accessory		Yes w/ frame accessory			
Nominal Size	6"	8"	6"	8"	4"	6"	8"	9"
Wattages/ Nominal Lumens	13W/1300 lm, 18W/1800 lm	13W/1400 lm, 18W/1900 lm	12W/950 lm, 18W/1400 lm, 27W/2200 lm	12W/1000 lm, 18W/1500 lm, 24W/2000 lm, 40W/3300 lm	10W/900 lm, 15W/1350 lm	10W/900 lm, 15W/1350 lm, 20W/2000 lm	10W/900 lm, 15W/1500 lm, 20W/2000 lm, 30W/3200 lm, 50W/4600 lm	10W/900 lm, 15W/1500 lm, 20W/2000 lm, 30W/3200 lm, 50W/4600 lm
CCT	3000K, 3500K, 4000K		3000K, 4000K		3000K, 3500K, 4000K			
CRI*	≥80		≥80		≥80			
Voltage	120-277V		120-277V		120-277V			
Dimming	Triac (120V only)		0-10V		0-10V, Triac (120V only)			
EM Option	Iota IIS-35-HE Compatible (Not sold by MaxLite)		EBUDV487D145A (Sold Separately)		Integrated Emergency Backup			
Rating	Non-IC/Damp		Non-IC/Damp		IC/Non-IC/Damp			
Safety Certifications	ETL Classified, ETL Listed		UL Classified		UL Classified			
Certifications	Energy Star		Energy Star		Energy Star			
L70	50,000 Hours		50,000 Hours		50,000 Hours			
Warranty	5 Years		5 Years		5 Years			
Accessories	None		Frames, Trim Extender		Frames, Trim Extender			

\* High CRI available by special order

Ceiling Height	Lumens	Equivalencies	4"	6"	8"	9"
8'-20'	1000 ± 250	MH - 50W CFL - 18W, 26W, 32W	RRXC10U## + RRC4-RFL	RRXC10U## + RRC6-RFL RRECO612##W/V2	RRXC10U## + RRC8-RFL RRECO812##W/V2	RRXC10U## + RRC9-RFL
	1500 ± 250	INC. - 65W BR30, 120W BR40, 150W A21	RRXC15U## + RRC4-RFL	RRXC15U## + RRC6-RFL RRECO618##W/V2 RCF613##W	RRXC15U## + RRC8-RFL RRECO818##W/V2 RCF813##W	RRXC15U## + RRC9-RFL
20'-30'	2000 ± 250	MH - 70W CFL - 2/26W, 1/42W, 1/57W, 2/32W		RRXC20U## + RRC6-RFL RRECO627##W/V2 RCF618##W	RRXC20U## + RRC8-RFL RRECO824##W/V2 RCF818##W	RRXC20U## + RRC9-RFL
	2500 ± 250	INC. - 200W A21				
30'-40'	3000 ± 250	MH - 70W, 100W CFL - 3/26W, 3/32W, 2/42W, 3/42W, 2/57W INC. - 300W BR40			RRXC30U## + RRC8-RFL RRECO840##W/V2	RRXC30U## + RRC9-RFL
	3500 ± 250					
	4000 ± 250					
	4500 ± 250				RRXC50U## + RRC8-RFL	RRXC50U## + RRC9-RFL

## UNIVERSAL COMMERCIAL DOWNLIGHT FIXTURES

### RCF Series Overview:

The Universal Downlight Fixture is an economical, all-in-one solution for adding recessed downlighting to hospitality, retail, office and other commercial lighting applications. The downlight is designed with an integral whip, which connects directly to a junction box (existing or independently mounted), and a universal driver that eliminates the need for a traditional recessed housing, saving installers time and money. Simply connect power to the light and use the incorporated spring mounting to place it into the ceiling - no can, bulb or extra labor required!

### Features:

- Mounts directly into ceiling, no housing required
- 120-277V, 50/60Hz operation
- Triac dimming (120V only)
- Power factor:  $\geq 0.9$
- CRI:  $\geq 80$  Standard,  $\geq 90$  Optional
- 5-year limited warranty
- Suitable for damp locations





# ECO SERIES-COMMERCIAL RECESSED RETROFIT DOWNLIGHT

## RRECO Series Overview:

The ENERGY STAR certified ECO Series LED Recessed Retrofit Downlight combines low up-front cost, minimal labor, best-in-class energy efficiency and architectural-quality light to deliver an exceptional value for customers. The retrofit offers out-of-the-box dimming compatibility using 0-10-volt controls and features a one-piece design that is quick and easy to install into existing recessed frames.

### Features:

- Universal voltage (120V-277V)
- Mounts into existing recessed frame
- Supplied with optional retaining clips if existing frame does not have adequate friction springs to secure reflector
- cULus listed for damp location use
- CRI:  $\geq 80$
- PF:  $\geq 0.9$
- Dimmable 0-10V to 10%
- Five year limited warranty

### Accessories:

- Frames





**NEW!**

# LED COMMERCIAL DOWNLIGHT RETROFITS

## RRC Series Overview:

The RRC family of LED Downlight retrofits is a highly efficient option for upgrading existing Incandescent, Fluorescent and Metal Halide downlight fixtures to energy saving LED. The highly efficient design allows users to capture energy savings while also gaining the benefit of dimming. Compatible with many architectural and commercial downlight housings this retrofit can be used in most applications. Suitable for Damp locations.

### Features:

- Integrated EM option
- Light engines, reflectors and frames ordered separately
- Universal voltage (120-277)
- Mounts into existing recessed frame
- Supplied with optional retaining clips if existing frame does not have adequate friction springs to secure reflector
- cULus listed for damp location use
- CRI: > 80
- PF: >.9
- A wide variety of CCTs available
- Five year limited warranty
- 0-10V dimming and Triac dimming drivers available



## Residential: Which downlights will work best for your project?

MaxLite has a downlight for every residential application. There are a variety of options to choose from for both retrofit and new construction.

### Residential Downlights:



J-Box Downlights



Residential Downlight Retrofits



Residential Downlight Retrofits

## J-BOX DOWNLIGHTS

### J-Box Downlights Overview:

The J-Box Downlight is the easy and economical way to add high quality recessed lighting to residential and commercial spaces. The downlight is built with an integral junction box that eliminates the need for a traditional recessed housing during installation in new construction and retrofit projects. The fixture simply gets wired to a wall switch and placed into the ceiling - no can, bulb or extra labor required!

### Features:

- Mounts directly into ceiling, no housing required
- 120V, 60Hz operation
- IC and Airtight rated for direct installation
- Triac dimming standard
- Power factor:  $\geq 0.9$
- CRI:  $\geq 80$  Standard,  $\geq 90$  Optional
- 5-year limited warranty
- Suitable for wet locations
- High CRI models Support Compliance of JA8-2016-E



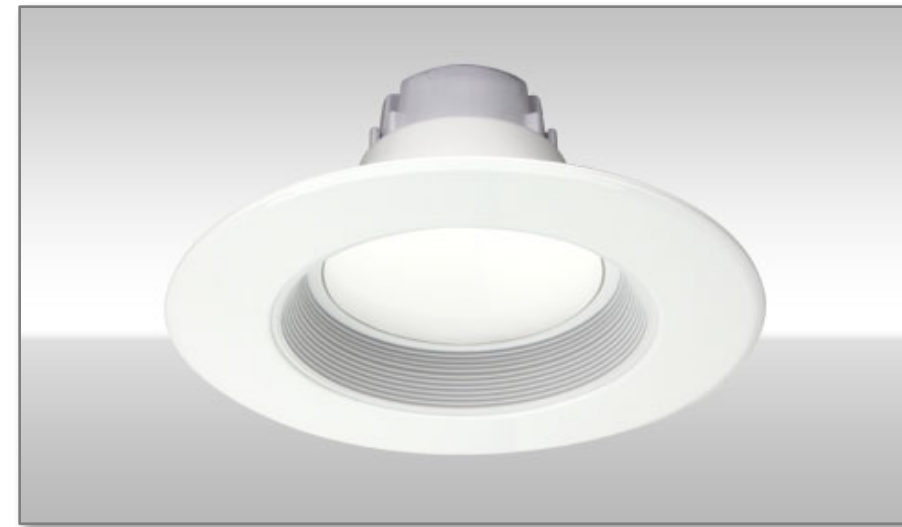
# RESIDENTIAL DOWNLIGHT RETROFITS 120V

## Residential Downlight Retrofits Overview:

Designed as an energy-efficient lighting solution for remodeling or new construction projects, MaxLite's LED Recessed Retrofit downlights are the ideal replacements for 50- to 75-watt incandescent lamps in the industry's most popular four- and six-inch recessed downlight fixtures. Part of the MaxLED® family of products, the LED Recessed Retrofit downlights deliver uniform color distribution and superior quality lighting compared to most incandescent and CFL fixtures. ENERGY STAR® qualified models are available.

## Features:

- High lumen transmission and diffusing for even illumination
- Supplied with E26 base adapter
- Five year limited warranty
- Suitable for wet locations





# RESIDENTIAL DOWNLIGHT RETROFITS 120V-277V

## Residential Downlight Retrofits Overview:

Designed as an energy-efficient lighting solution for remodeling or new construction projects, MaxLite's LED Recessed Retrofit downlights are the ideal replacements for 50- to 75-watt incandescent lamps in the industry's most popular four- and six-inch recessed downlight fixtures. Part of the MaxLED® family of products, the LED Recessed Retrofit downlights deliver uniform color distribution and superior quality lighting compared to most incandescent and CFL fixtures. ENERGY STAR® qualified models are available.

## Features:

- High lumen transmission and diffusing for even illumination
- Supplied with E26 base adapter
- Five year limited warranty
- Suitable for wet locations



# MAXLITE UNIVERSITY

The MaxLite University Lighting Degree program offers three comprehensive courses in lighting fundamentals, ranging from beginner to advanced learning. It's free and eligible for the following continuing education units from the American Lighting Association:

- **Lighting Fundamentals - ALA: 4 CLC Credit Hours**
- **Lighting Fundamentals (Intermediate) - ALA: 2 CLC Credit Hours**
- **Lighting Fundamentals (Advanced) – ALA: 3 CLC Credit Hours**



Welcome to  
**MaxLite®**  
UNIVERSITY

for Lighting  
and Technology

**Click Here  
To Get Started**

The department function is to train and provide product training material for all MaxLite representatives, customers and employees. The goal of the department is to educate the staff and rep network to a full and complete understanding of our products, technologies, marketplace, and business environments. We endeavor to educate how and why lighting functions, repair and replacement, as well as compare to competitors or listing requirements. We will accomplish this by providing the tools and services proactively and as needed to supplement.

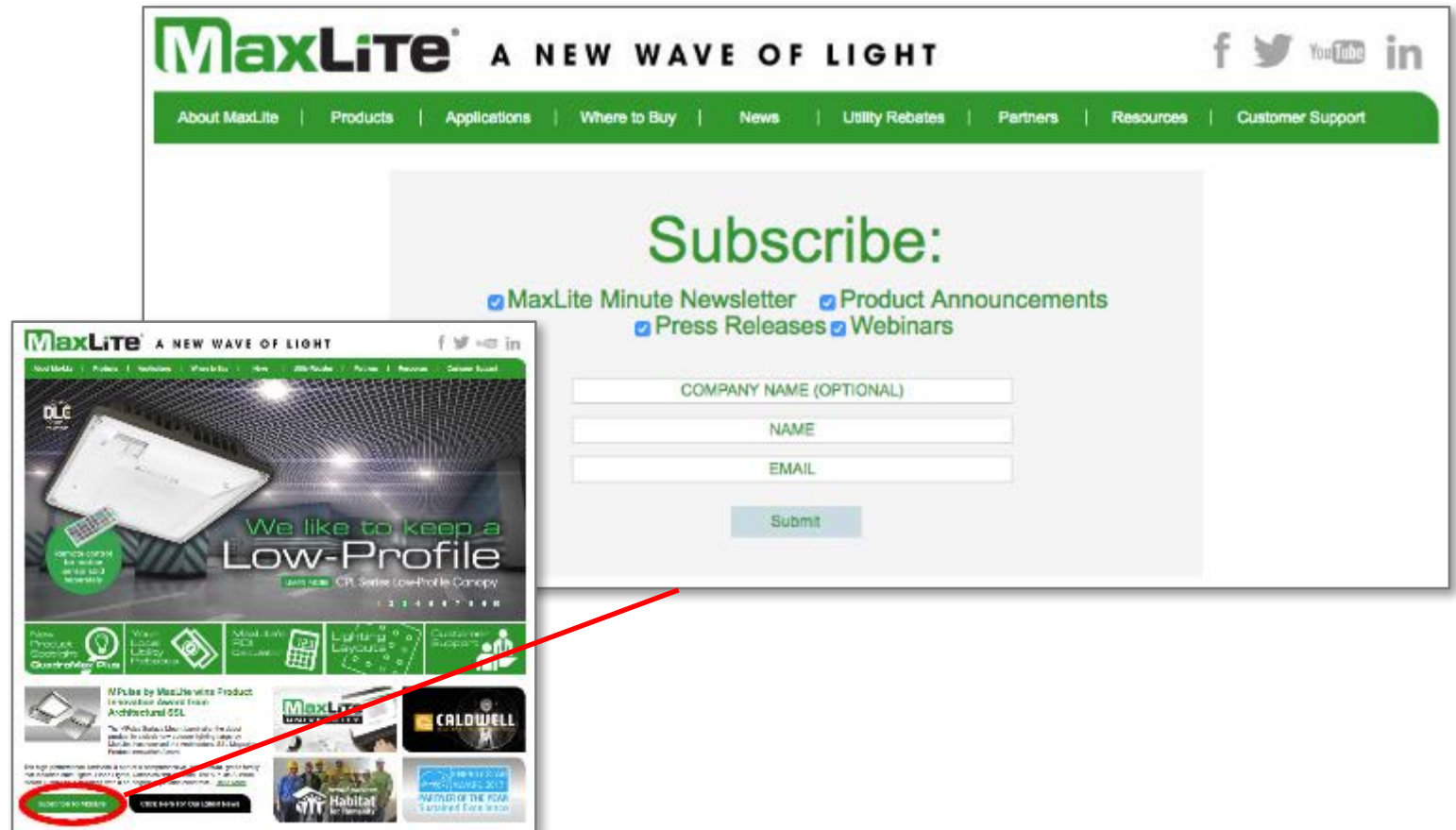
## STAY UPDATED – SUBSCRIBE!

Stay updated and subscribe to:

- MaxLite Minute Newsletter
- Product Announcements
- Press Releases
- Webinars

Click the “Subscribe To MaxLite” Button at the bottom of MaxLite’s website or visit:

<http://www.maxlite.com/subscribe>



The image shows a screenshot of the MaxLite website with a subscription form overlaid. The website header includes the MaxLite logo and the tagline "A NEW WAVE OF LIGHT". The navigation menu lists: About MaxLite, Products, Applications, Where to Buy, News, Utility Rebates, Partners, Resources, and Customer Support. The subscription form is titled "Subscribe:" and includes checkboxes for "MaxLite Minute Newsletter", "Product Announcements", "Press Releases", and "Webinars". Below the checkboxes are input fields for "COMPANY NAME (OPTIONAL)", "NAME", and "EMAIL", followed by a "Submit" button. A red arrow points from the "Subscribe To MaxLite" button on the website to the subscription form.



## MAXLITE ON SOCIAL MEDIA

### Follow & Share MaxLite On Social Media

- LinkedIn
- Facebook
- Twitter
- YouTube





## THANKS FOR ATTENDING!

### QUESTIONS/ANSWERS

Thank you everyone for your attention! Please feel free to use this opportunity to ask any questions you may have about MaxLite or the products shown in this presentation.

FOR MORE INFORMATION ABOUT OTHER MAXLITE PRODUCTS, OR  
FOR LIGHTING QUESTIONS IN GENERAL; PLEASE CONTACT:

[info@maxlite.com](mailto:info@maxlite.com)

<http://www.maxlite.com>

1-800-555-5629