



# WELCOME

---

# MAXLITE'S

# LED RECESSED FIXTURES

1/29/15 Webinar

Presented by: Greg Murphy

With special guest: Ken Charton

## TODAY'S TOPICS

- Residential & Commercial Products
- Retrofit, New Construction & Remodel Products
- New Value Grade Product (Fits in Progress P87 Can)
- New Adjustable Downlight
- 0-10V Commercial Downlight (Dims at 120 & 277V)
- Accessories & Options
- Q&A Session



**MAXLITE PRESENTS:  
LED RECESSED  
FIXTURES**

MaxLite has a broad offering of recessed LED cans for all of your applications. Join us 1/29/15 and learn about the whole lineup!

- New Construction
- Residential
- Commercial & Industrial
- Remodel
- Faux Cans



**JOIN US TO LEARN MORE!**

**MAXLITE WEBINARS**

**Thurs, January 29 at 12pm EST**  
To register click the "REGISTER NOW" button below

**REGISTER NOW**

Follow us on:   

Add webinar to your Calendar (If prompted to OPEN or SAVE, choose OPEN)

## MAXLITE'S LED RECESSED FIXTURES



### LED Recessed Downlight Retrofits

The LED Recessed Downlight Retrofits are replacements for existing, less efficient incandescent and compact fluorescent (CFL) light sources commonly used in the recessed downlighting marketplace. ENERGY STAR®-qualified models are available.



### LED Recessed Downlight Fixtures

The LED Recessed Downlight Fixtures are designed for new construction and remodel recessed projects.



### LED Faux Cans

ENERGY STAR-certified LED Faux Cans accomplish the task of recessed downlighting without the time and expense of working with drywall.



### LED Commercial Recessed Downlight Fixtures

Offered in a variety of aperture sizes, color temperatures and wattages, MaxLite's ENERGY STAR-certified LED Commercial Recessed Downlights are an easy-to-install, high-performance lighting solution.



### LED Commercial Recessed Downlight Retrofits

The commercial-grade LED Recessed Downlight Retrofits are ideal for retrofitting inefficient fixtures in malls, hospitals, airports, offices, lobbies and other commercial applications. ENERGY STAR®-qualified models are available.



### LED Architectural Downlight Fixtures

MaxLite's Energy Star qualified Architectural Downlight Fixtures are offered in 4, 6 and 8' aperture sizes, work with a wide variety of ceiling systems and can be vertically adjusted up to 5 inches.

## LIGHT COMMERCIAL & RESIDENTIAL RETROFIT MODELS



4" - RR41127W



4" - RR409



6" - RR610



6" - RR612/619



6" - RR614



# RECESSED RETROFIT:

## LIGHT COMMERCIAL & RESIDENTIAL RETROFIT MODELS

### 4" DOWNLIGHT RETROFIT



Constructed with a high-efficiency LED array and dimmable driver, the four-inch Downlight Retrofit features an optical diffuser that produces high lumen transmission and even illumination. The fixtures are suitable for damp locations. This four-inch downlight retrofit is the economical solution for consumers looking to reduce energy costs. These retrofits are offered in a variety of lumen packages appropriate for commercial and residential applications.

PROJECT NAME
CATALOG NUMBER
NOTES
FIXTURE TYPE

#### FEATURES:

- High lumen transmission and diffusing for even illumination
- White paint finish standard
- Dimmable down to 10% (see page 2 for recommended dimmers)
- Driver features power factor of >.90, THD of <20 percent and has integral thermal protection to sense high temperature or internal failure
- Supplied with E26 base adapter
- Virtually no UV emitted
- Suitable for use in damp locations

#### CONSTRUCTION:

- One-piece durable die-cast aluminum heat sink with integrated trim
- Module construction includes LEDs, heat sink, lens and baffle trim
- Impact-resistant plastic lens
- Uses spring clips to easily secure into a four-inch housing



#### COMPATIBLE DIMMERS:

MAKE	DIMMER MODEL
Lutron	TG-600PR
Lutron	S-600PR
Lutron	CT-103P
Leviton	cat.NO.6683

#### Luminaire Ordering Information:

Order Code	Watts	Model Number	Inc. Equivalent	Lumens	CRI	Lamp Life (Hrs.)	Dimensions Dia" x H"	CCT
72883	11	RR41127W	50W	650	80	35,000	5.1" X 3.67"	2700
74214	12	RR41227WC	50W	600	90	35,000	5.1" X 3.67"	2700

Lighting layouts and spacing criteria available upon request



MaxLite® 1-800-555-5629 | Fax: 973-244-7333 | Web: www.maxlite.com | E-mail: info@maxlite.com Revised: 10-31-14

## RR41127W

### RR409



#### 4" LED Downlight Retrofit

The 4" Retrofit LED module with integral trim (RR409) and an E26 medium screw base adapter have been classified for use with most 4" housings on the market, including IC/airtight and non-IC incandescent recessed housings.

Constructed with high efficacy LEDs and an integral dimmable driver (dimming at 120V only), the fixtures feature an optical diffuser that produces high lumen transmission and even illumination. The fixtures are suitable for damp and wet locations, including kitchens and showers.

#### FEATURES:

- 120-277V universal power supply
- High lumen transmission and diffusing for even illumination
- Dimmable down to 10 percent (See page 2 for recommended dimmers)
- Driver power factor: >.90, THD <20% and has integral thermal protection to sense high temperature or internal failure
- The driver mounts externally to the module, allowing future replacement, if needed.
- Suitable for damp and wet locations
- Supplied with an E26 base adapter
- 90-degree beam angle

#### CONSTRUCTION:

- Durable die-casting aluminum heat sink with integrated trim in one-piece
- Module construction includes LED, heat sink, lens and white trim
- Impact-resistant plastic lens
- Installs into 4-inch cans using blade springs

#### Luminaire Ordering Information:

Watts	Order Number	Model Number	Inc. Equivalent	Lumens	CRI	Lamp Life (Hrs.)	Dimensions Dia" x H"	CCT
9	71778	RR40930W	50	500	80	50,000	5" x 3.5"	3000
9	71780	RR40950W	50	525	80	50,000	5" x 3.5"	5000

\*Energy Star Qualified

Lighting layouts and spacing criteria available upon request



MaxLite® 1-800-555-5629 | Fax: 973-244-7333 | Web: www.maxlite.com | E-mail: info@maxlite.com Revised: 08-07-14

## RR409

PROJECT NAME: \_\_\_\_\_ CATALOG NUMBER: \_\_\_\_\_  
 NOTES: \_\_\_\_\_ FIXTURE SCHEDULE: \_\_\_\_\_

Page: 1 of 2

**LED RECESSED RETROFIT DOWNLIGHT**  
RR SERIES

RR610XXW Model

**PRODUCT DESCRIPTION:**  
MaxLite's LED Recessed Downlight Retrofit is a value-engineered replacement for incandescent lamps in standard five and six-inch recessed downlight fixtures. Compatible with 120V systems, the 10W LED retrofit delivers 875 lumens with excellent uniformity and color rendering, in color temperatures ranging from warm to cool white.

**FEATURES:**

- Installs into most 5" & 6" recessed cans
- 120V power supply
- E26 base adapter
- Impact-resistant plastic lens
- White finish standard
- 5 year warranty
- Dims to 7% or lower when used with recommended controls (see Compatible Dimmers chart)

MODEL SELECTION (Full list of order codes on pg. 8) Typical order example: RR61027W

RR	610	W	
FAMILY	SIZE AND WATTAGE (NOMINAL)	CCT	COLOR
RR= Recessed Retrofit Downlight	610= 6" 10W	27= 2700K 30= 3000K 41= 4100K	W= White

**COMPATIBLE DIMMERS:**

MAKE	DIMMER MODEL	MAKE	DIMMER MODEL
Lutron	SCL 153P	Leviton	Decora 6672
Lutron	DVCL 153P	Leviton	IPLO6
Lutron	TGCL 153P		
Lutron	CTCL 153P		
Lutron	AYLV 600P		

Phone: 1-800-555-5629 | Fax: 973-244-7333 | Web: www.maxlite.com | E-mail: info@maxlite.com

MAX14171 Revised:12-17-14

## RR610

PROJECT NAME: \_\_\_\_\_  
 CATALOG NUMBER: \_\_\_\_\_  
 NOTES: \_\_\_\_\_  
 FIXTURE TYPE: \_\_\_\_\_

## 6" DOWNLIGHT RETROFIT

Constructed with a high-efficacy LED array and dimmable driver, the 6-inch Downlight Retrofit features an optical diffuser that produces high lumen transmission and even illumination. The fixtures are suitable for damp locations. This six-inch downlight retrofit is the economical solution for consumers looking to reduce energy costs. These retrofits are offered in a variety of CRI options and lumen packages appropriate for commercial and residential applications.

**FEATURES:**

- High lumen transmission and diffusing for even illumination
- Supplied with E26 base adapter (High CRI models come with an additional GU24 adapter)
- Virtually no UV emitted
- Five year limited warranty
- ENERGY STAR qualified
- Suitable for damp location
- High CRI models comply with Title 24 code

**CONSTRUCTION:**

- One-piece durable die-cast aluminum heat sink with integrated trim
- Module construction includes LEDs, heat sink, lens and white trim
- Impact-resistant plastic lens
- Fits recessed cans with torsion spring ('C' Shaped) brackets

**ELECTRICAL:**

- 120V, 60Hz
- Dimmable down to 5% (see page two for a list of compatible dimmers)
- L70 of 35,000 hours
- Power factor: > .9

MLRR-GUADAPT  
MLRR-CBRACKET

Accessories

Order Number	Model Number	Description
73552	MLRR-GUADAPT	GU24 socket adapter - Supplied with RR61227WC and RR61927WC
73496	MLRR-CBRACKET	C Bracket for downlight can - Includes two brackets and self tapping screws

**Luminaire Ordering Information:**

Watts	Order Code	Model Number	Inc. Equivalent	Lumens	CRI	Lamp Life (Hrs.)	Dimensions Dia" x H"	CCT
12	72884	RR61227W	75W	750	80	35,000	7.5" X 3.87"	2700K
12	73545	RR61227WC	75W	750	90	35,000	7.5" X 3.87"	2700K
12	73882	RR61230W	75W	750	80	35,000	7.5" X 3.87"	3000K
19	72885	RR61927W	120W	1200	80	35,000	7.5" X 3.87"	2700K
19	73544	RR61927WC	120W	1170	90	35,000	7.5" X 3.87"	2700K

Lighting layouts and spacing criteria available upon request

MaxLite® 1-800-555-5629 | Fax: 973-244-7333 | Web: www.maxlite.com | E-mail: info@maxlite.com Revised: 1-02-15

## RR612/619

## RECESSED RETROFIT MODELS

### RR614



#### 6" LED Downlight Retrofit Fixture

The 6" Retrofit LED module & trim kit (RR614) with an E26 medium screw base has been classified for use with most 5" and 6" housings on the market, including IC/airtight and non-IC incandescent recessed housings.

Constructed with high-efficiency LEDs with an integral dimmable driver, the fixtures feature an optical diffuser that produces high lumen transmission and even illumination. The fixtures are suitable for damp and wet locations.

PROJECT NAME
CATALOG NUMBER
NOTES
FIXTURE TYPE

#### FEATURES:

- 120-277V universal power supply
- High lumen transmission and diffusing for even illumination
- White paint finish standard
- 10-100 percent dimmable at 120V only (see page 2 for recommended dimmers)
- Driver features power factor of > .90, THD of <20 percent and has integral thermal protection to sense high temperature or internal failure
- Driver mounts externally to the module, allowing for future replacement, if needed
- Suitable for damp and wet locations
- Supplied with E26 base adapter
- Virtually no UV emitted

#### CONSTRUCTION:

- Durable die-casting aluminum heat sink with integrated trim in one piece
- Module construction includes LEDs, heat sink, lens and baffle trim
- Impact-resistant plastic lens
- Fits most 5" and 6" recessed cans with torsion spring ('C' Shaped) brackets\*



#### Luminaire Ordering Information:

Watts	Order Number	Model Number	Inc. Equivalent	Lumens	CRI	Lamp Life (Hrs.)	Dimensions Dia" x H"	CCT
14	71775	RR61430W*	90W	900	85	50,000	7.25" X 3.87"	3000
14	72060	RR61441W	90W	950	85	50,000	7.25" X 3.87"	4100
14	71777	RR61450W	90W	1000	85	50,000	7.25" X 3.87"	5000

Lighting layouts and spacing criteria available upon request

\*ENERGY STAR certified subcomponent

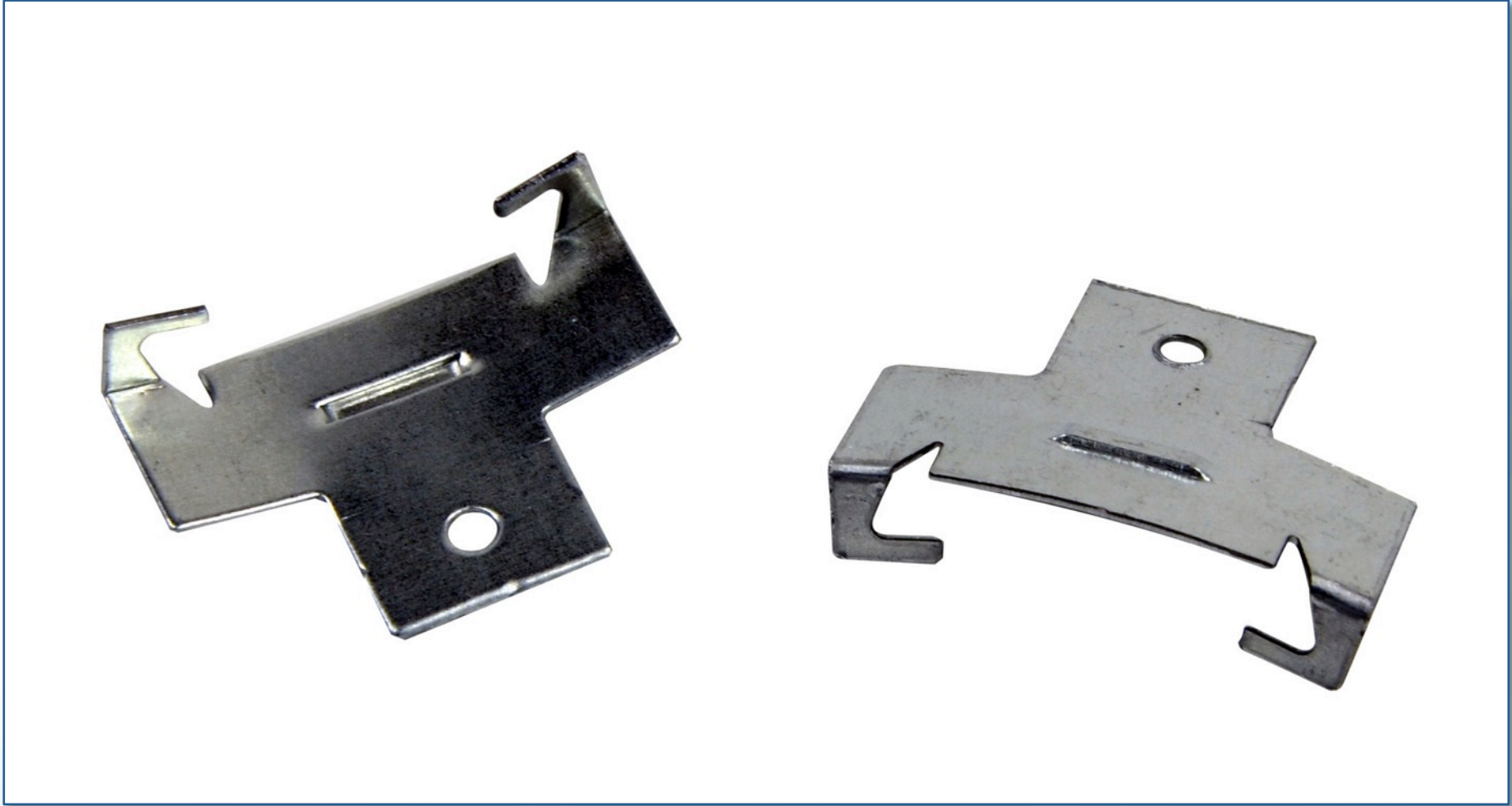


MaxLite®: 1-800-555-5629 | Fax: 973-244-7333 | Web: www.maxlite.com | E-mail: info@maxlite.com

Revised: 8-07-14

## RR614

## MLRR C BRACKET





## MAXLITE'S LED RECESSED FIXTURES



### LED Recessed Downlight Retrofits

The LED Recessed Downlight Retrofits are replacements for existing, less efficient incandescent and compact fluorescent (CFL) light sources commonly used in the recessed downlighting marketplace. ENERGY STAR®-qualified models are available.



### LED Recessed Downlight Fixtures

The LED Recessed Downlight Fixtures are designed for new construction and remodel recessed projects.



### LED Faux Cans

ENERGY STAR-certified LED Faux Cans accomplish the task of recessed downlighting without the time and expense of working with drywall.



### LED Commercial Recessed Downlight Fixtures

Offered in a variety of aperture sizes, color temperatures and wattages, MaxLite's ENERGY STAR-certified LED Commercial Recessed Downlights are an easy-to-install, high-performance lighting solution.



### LED Commercial Recessed Downlight Retrofits

The commercial-grade LED Recessed Downlight Retrofits are ideal for retrofitting inefficient fixtures in malls, hospitals, airports, offices, lobbies and other commercial applications. ENERGY STAR®-qualified models are available.



### LED Architectural Downlight Fixtures

MaxLite's Energy Star qualified Architectural Downlight Fixtures are offered in 4, 6 and 8' aperture sizes, work with a wide variety of ceiling systems and can be vertically adjusted up to 5 inches.

## LED RECESSED DOWNLIGHT FIXTURES



**4" New Construction & Remodel  
(RF409ICAT30W / RFR409ICAT30W)**

**6" New Construction & Remodel  
(RF614ICAT30W / RFR614ICAT30W)**

# LED RECESSED DOWNLIGHT FIXTURES

## 4" New Construction and Remodel LED Downlight Fixtures



MaxLite's LED downlights are great energy efficient solutions for recessed lighting applications. The new construction and remodel fixtures have been engineered to make installation in grid ceilings and dry wall ceilings a snap. Each recessed fixture is supplied with a performance-leading LED module and white trim ring that installs flush to the ceiling.

A high performance LED array emits industry leading lumen output, high CRI (80+) and still delivers extended lifetime in excess of a 50,000 L70 measurement.

### FEATURES:

- Fully dimmable down to 10 percent
- High lumen transmission and diffusing for even illumination
- CRI: >80
- Suitable for dry and wet locations
- Airtight rated – meets air tight requirements for 2.0 CFM or less air leakage
- Rated for direct insulation contact
- Supplied with internal thermal protection
- Universal voltage 120-277 volt
- Power factor: >.9
- Beam angle: 90 degree

### CONSTRUCTION:

- New construction housing includes 13" hanger bars, supplied with pre-installed nails; just hammer and go
- Impact-resistant plastic lens
- Housing and trim are gasketed to maximize building energy efficiency
- Hanger bars feature notches for easy installation to grid ceilings, which can be secured using wire or screws
- Remodel housing includes three push out mounting clips for easy installation
- Recessed housing is aluminum; new construction frame is steel

PROJECT NAME
CATALOG NUMBER
NOTES
FIXTURE TYPE



RF409ICAT30W



RFR409ICAT30W



### Luminaire Ordering Information:

Watts	Order Number	Model Number	Lumens	CRI	Luminaire Life (Hrs.)	Fixture Dimensions W"x H"x L"	CCT
9	71784	RF409ICAT30W	500	80	50,000	6.37 x 5.56 x 8.12	3000
9	71790	RFR409ICAT30W	500	80	50,000	4.12 x 5.83 x 12	3000

Lighting layouts and spacing criteria available upon request

MaxLite®: 1-800-555-5629 | Fax: 973-244-7333 | Web: www.maxlite.com | E-mail: info@maxlite.com



Revised: 10-30-13

## RF409ICAT30W / RFR409ICAT30W

## 6" New Construction and Remodel LED Downlight Fixtures



MaxLite's LED downlights are great energy efficient solutions for recessed lighting applications. The new construction and remodel fixtures have been engineered to make installation in grid ceilings and dry wall ceilings a snap. Each recessed fixture is supplied with a performance-leading LED module and white trim ring that installs flush to the ceiling.

A high performance LED array emits industry leading lumen output, high CRI (85), and still delivers extended lifetime in excess of a 50,000 L70 measurement.

### FEATURES:

- Fully dimmable down to 10 percent
- High lumen transmission and diffusing for even illumination
- CRI: >85
- Suitable for dry and wet locations
- Airtight rated – meets airtight requirements for 2.0 CFM or less air leakage
- Rated for direct insulation contact
- Supplied with internal thermal protection
- Universal voltage 120-277 volt
- Power factor: >.9
- Beam angle: 90 degree
- Available in 3000K and 5000K

### CONSTRUCTION:

- New construction housing includes 13" hanger bars, supplied with pre-installed nails; just hammer and go
- Impact-resistant plastic lens
- Housing and trim are gasketed to maximize building energy efficiency
- Hanger bars feature notches for easy installation to grid ceilings, which can be secured using wire or screws
- Remodel housing includes three push out mounting clips for easy installation
- Recessed housing is aluminum; new construction frame is steel

PROJECT NAME
CATALOG NUMBER
NOTES
FIXTURE TYPE



RF614ICAT30W



RFR614ICAT30W



### Luminaire Ordering Information:

Watts	Order Number	Model Number	Lumens	CRI	L70 Lifetime (Hours)	Fixture Dimensions (W"x H"x L")	CCT
14	71781	RF614ICAT30W	900	85	50,000	7.6 x 7.5 x 10.4	3000
14	71783	RFR614ICAT50W	1000	85	50,000	7.6 x 7.5 x 10.4	5000
14	71787	RF614ICAT30W	900	85	50,000	6.1 x 7.5 x 12.8	3000
14	71789	RFR614ICAT50W	1000	85	50,000	6.1 x 7.5 x 12.8	5000

Lighting layouts and spacing criteria available upon request

MaxLite®: 1-800-555-5629 | Fax: 973-244-7333 | Web: www.maxlite.com | E-mail: info@maxlite.com



Revised: 06-01-14

## RF614ICAT30W / RFR614ICAT30W



## MAXLITE'S LED RECESSED FIXTURES



### LED Recessed Downlight Retrofits

The LED Recessed Downlight Retrofits are replacements for existing, less efficient incandescent and compact fluorescent (CFL) light sources commonly used in the recessed downlighting marketplace. ENERGY STAR®-qualified models are available.



### LED Recessed Downlight Fixtures

The LED Recessed Downlight Fixtures are designed for new construction and remodel recessed projects.



### LED Faux Cans

ENERGY STAR-certified LED Faux Cans accomplish the task of recessed downlighting without the time and expense of working with drywall.



### LED Commercial Recessed Downlight Fixtures

Offered in a variety of aperture sizes, color temperatures and wattages, MaxLite's ENERGY STAR-certified LED Commercial Recessed Downlights are an easy-to-install, high-performance lighting solution.



### LED Commercial Recessed Downlight Retrofits

The commercial-grade LED Recessed Downlight Retrofits are ideal for retrofitting inefficient fixtures in malls, hospitals, airports, offices, lobbies and other commercial applications. ENERGY STAR®-qualified models are available.



### LED Architectural Downlight Fixtures

MaxLite's Energy Star qualified Architectural Downlight Fixtures are offered in 4, 6 and 8' aperture sizes, work with a wide variety of ceiling systems and can be vertically adjusted up to 5 inches.



## LED FAUX CANS

PROJECT NAME: \_\_\_\_\_ CATALOG NUMBER: \_\_\_\_\_

NOTES: \_\_\_\_\_ FIXTURE SCHEDULE: \_\_\_\_\_

Page: 1 of 3

---

### LED FAUX CAN

LFC Series

1.25"

1.25"

5.9"

4"

1.25"

1.25"

7.4"

6"

**PRODUCT DESCRIPTION:**  
LED Faux Cans accomplish the task of recessed downlighting without requiring installers to use a recessed can. Faux Cans are mountable to a 4-inch junction box. An optional mounting bracket allows existing recessed cans to be retrofitted with the faux can, for an easy upgrade to LED lighting.

Featuring driverless technology that increases performance and reliability, LED Faux Cans are equivalent up to 75W PAR 30 halogen lamp and offer vivid color rendering. They are wet-listed, making them suitable for virtually any application that requires downlighting.

**FEATURES:**

- Mounts to a 4" junction boxes – Achieve Recessed Down lighting without using a bulky can
- Vivid Color Rendering – 90+ CRI standard
- Optional Mounting Bracket allows Recessed Cans to be retrofitted with the LED Faux Can
- No Driver – Key point of failure in LED systems is completely eliminated
- CSA Wet Listed – Install it virtually anywhere
- Dimmable with many Triac controls (visit website for complete list)
- Energy Star / T24 Compliant

**MODEL SELECTION** (Full list of order codes on pg. 2) Typical order example: LFC41327W

LFC	SIZE & WATTAGE (NOMINAL)	CCT	W
LFC= LED Faux Can	413= 4 inches and 13W, replaces 50W Halogen 615= 6 inches and 15W, replaces 75W Halogen	27= 2700K	W= White

**ACCESSORIES**

ORDER CODE	MODEL NUMBER	DESCRIPTION	IMAGE
74006	LFC4-BRACKET	LED Faux Can Bracket for 4" Recessed Fixtures	
74005	LFC6-BRACKET	LED Faux Can Bracket for 6" Recessed Fixtures	

**COMPATIBLE DIMMERS:**

MAKE	DIMMER MODEL	MAKE	DIMMER MODEL
Lutron	CTCL-153PD	Leviton	IPL06
Lutron	LGCL-153PL	Leviton	SureSlide
Lutron	DVELV-300P	Leviton	IPL10
Smart Home	2876D		

Phone: 1-800-555-5629 | Fax: 973-244-7333 | Web: www.maxlite.com | E-mail: info@maxlite.com

MAX14138 Revised: 12-24-14

### LED Faux Cans

#### Overview:

ENERGY STAR-certified LED Faux Cans accomplish the task of recessed downlighting without the time and expense of working with drywall. They are mountable to a four-inch junction box, allowing installers to achieve downlighting without the use of a bulky can, or labor associated with cutting open the ceiling. An optional mounting bracket allows existing recessed cans to be retrofitted with the faux can, for an easy upgrade to more energy-efficient lighting. LED Faux Cans feature driverless technology that increases performance and reliability over the fixture's lifetime.

Equivalent to a 75-watt Par 30 halogen lamp, LED Faux Cans offer vivid color rendering with a 90-plus CRI standard. The fixtures are wet-listed, making them suitable for virtually any indoor application that calls for downlighting.

#### Validations & Accolades:



## MAXLITE'S LED RECESSED FIXTURES



### LED Recessed Downlight Retrofits

The LED Recessed Downlight Retrofits are replacements for existing, less efficient incandescent and compact fluorescent (CFL) light sources commonly used in the recessed downlighting marketplace. ENERGY STAR®-qualified models are available.



### LED Recessed Downlight Fixtures

The LED Recessed Downlight Fixtures are designed for new construction and remodel recessed projects.



### LED Faux Cans

ENERGY STAR-certified LED Faux Cans accomplish the task of recessed downlighting without the time and expense of working with drywall.



### LED Commercial Recessed Downlight Fixtures

Offered in a variety of aperture sizes, color temperatures and wattages, MaxLite's ENERGY STAR-certified LED Commercial Recessed Downlights are an easy-to-install, high-performance lighting solution.



### LED Commercial Recessed Downlight Retrofits

The commercial-grade LED Recessed Downlight Retrofits are ideal for retrofitting inefficient fixtures in malls, hospitals, airports, offices, lobbies and other commercial applications. ENERGY STAR®-qualified models are available.



### LED Architectural Downlight Fixtures

MaxLite's Energy Star qualified Architectural Downlight Fixtures are offered in 4, 6 and 8' aperture sizes, work with a wide variety of ceiling systems and can be vertically adjusted up to 5 inches.

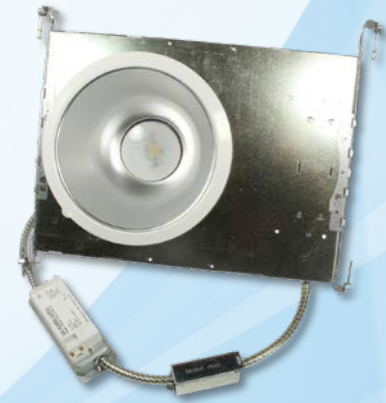
## LED COMMERCIAL RECESSED DOWNLIGHT FIXTURES



**LED 4" COMMERCIAL  
RECESSED DOWNLIGHT  
FIXTURE  
(RCF SERIES)**



**LED 6" COMMERCIAL  
RECESSED DOWNLIGHT  
FIXTURE  
(RCF SERIES)**



**LED 8" COMMERCIAL  
RECESSED DOWNLIGHT  
FIXTURE  
(RCF SERIES)**



# LED COMMERCIAL DOWNLIGHT FIXTURES

PROJECT NAME: \_\_\_\_\_ CATALOG NUMBER: \_\_\_\_\_

NOTES: \_\_\_\_\_ FIXTURE SCHEDULE: \_\_\_\_\_

Page: 1 of 2

**LED 8" COMMERCIAL RECESSED DOWNLIGHT FIXTURE**  
RCF SERIES

**PRODUCT DESCRIPTION:**  
MaxLite's NON-IC commercial recessed downlight fixtures are an economical LED lighting solution for new construction applications including offices, healthcare facilities, educational institutions and other buildings that want to reduce maintenance and energy consumption without sacrificing quality of light.

**FEATURES:**

- Unique optic allows high lumen transmission while concealing the LED light source resulting in efficient, inviting light and minimizing LED glare
- Junction box listed for through branch circuit wiring (Max. 8 no. 12AWG 90C conductors, 4 in and 4 out)
- Suitable for damp location use
- Dimmable down to 5% (120v only)
- Five year warranty

**ELECTRICAL:**

- Universal voltage, driver can be supplied with 120V-277V
- LED array will provide minimum 50,000 hour L70 lifetime

**MODEL SELECTION** (Full list of order codes on pg. 2) Typical order example: RCF8340W

RCF	8		W
FAMILY	SIZE	WATTAGE (NOMINAL)	CCT
RCF= Commercial Recessed Frame	8= 8" Nominal diameter reflector	15= 15W 26= 26W 34= 34W	30= 3000K 40= 4000K
			W= White

**ACCESSORIES**

ORDER CODE	MODEL NUMBER	DESCRIPTION	ACCESSORIES IMAGE
74088	RRS-BNRRNG	8" Brushed Nickel Trim Ring	

Phone: 1-800-555-5629 | Fax: 973-244-7333 | Web: www.maxlite.com | E-mail: info@maxlite.com

MAX14094 Revised: 11-19-14

## RCF SERIES



## MAXLITE'S LED RECESSED FIXTURES



### LED Recessed Downlight Retrofits

The LED Recessed Downlight Retrofits are replacements for existing, less efficient incandescent and compact fluorescent (CFL) light sources commonly used in the recessed downlighting marketplace. ENERGY STAR®-qualified models are available.



### LED Recessed Downlight Fixtures

The LED Recessed Downlight Fixtures are designed for new construction and remodel recessed projects.



### LED Faux Cans

ENERGY STAR-certified LED Faux Cans accomplish the task of recessed downlighting without the time and expense of working with drywall.



### LED Commercial Recessed Downlight Fixtures

Offered in a variety of aperture sizes, color temperatures and wattages, MaxLite's ENERGY STAR-certified LED Commercial Recessed Downlights are an easy-to-install, high-performance lighting solution.



### LED Commercial Recessed Downlight Retrofits

The commercial-grade LED Recessed Downlight Retrofits are ideal for retrofitting inefficient fixtures in malls, hospitals, airports, offices, lobbies and other commercial applications. ENERGY STAR®-qualified models are available.



### LED Architectural Downlight Fixtures

MaxLite's Energy Star qualified Architectural Downlight Fixtures are offered in 4, 6 and 8' aperture sizes, work with a wide variety of ceiling systems and can be vertically adjusted up to 5 inches.

## COMMERCIAL RECESSED DOWNLIGHT RETROFITS



**RR4 – 4"**  
**(14W/23W/26W)**



**RR6 – 6"**  
**(14W/26W/34W)**



**RR8 – 8"**  
**(14W/26W/34W)**



**RR9 – 9"**  
**(26W/34W)**

# COMMERCIAL RECESSED DOWNLIGHT RETROFITS

## 4" LED COMMERCIAL RECESSED DOWNLIGHT RETROFITS



The commercial-grade LED Recessed Downlight Retrofit is supplied with a quick connect-case and conduit to make an easy connection to an existing recessed fixture frame junction box.

PROJECT NAME
CATALOG NUMBER
NOTES
FIXTURE TYPE

### FEATURES:

- Universal voltage (120-277)
- Mounts into existing recessed frame
- Supplied with optional retaining clips if existing frame does not have adequate friction springs to secure reflector
- cETL listed for damp location use
- CRI: > 85
- PF: >.9
- A wide variety of CCTs available: 3000K and 4000K come standard 2700K and 5000K (contact MaxLite for quotations)
- Five year limited warranty
- Dimmable to 5% (120v only)



### CONSTRUCTION:

- Supplied with a heavy gauge anodized aluminum reflector in a haze finish
- External driver for easy retrofit and maintenance
- Power supply features integral thermal protection



Scan the QR code with a smartphone to view the installation video or visit the following link: <http://bit.ly/ledcrt>

### Luminaire Ordering Information:

Watts	Order Number	Model Number	Fluorescent Equivalent	Lumens	Lamp Life (Hrs.)	CCT
14	73567	RR41530W	1 X 26W PL	785	50,000	3000
14	73568	RR41540W	1 X 26W PL	875	50,000	4000
23	74202	RR42330W	2 X 18W PL	1635	50,000	3000
23	74203	RR42340W	2 X 18W PL	1695	50,000	4000
26	72605	RR42630W	2 X 18W PL	1340	50,000	3000
26	72606	RR42640W	2 X 18W PL	1515	50,000	4000

### Accessories

Order Number	Model Number	Description
74086	RR4-BNRING	4" BRUSHED NICKEL TRIM RING



Presents

## How To Install: MaxLite's Commercial LED Downlight Retrofit Kit

Watch the installation video on YouTube at:  
<http://youtu.be/JSYpNLzpxRQ>

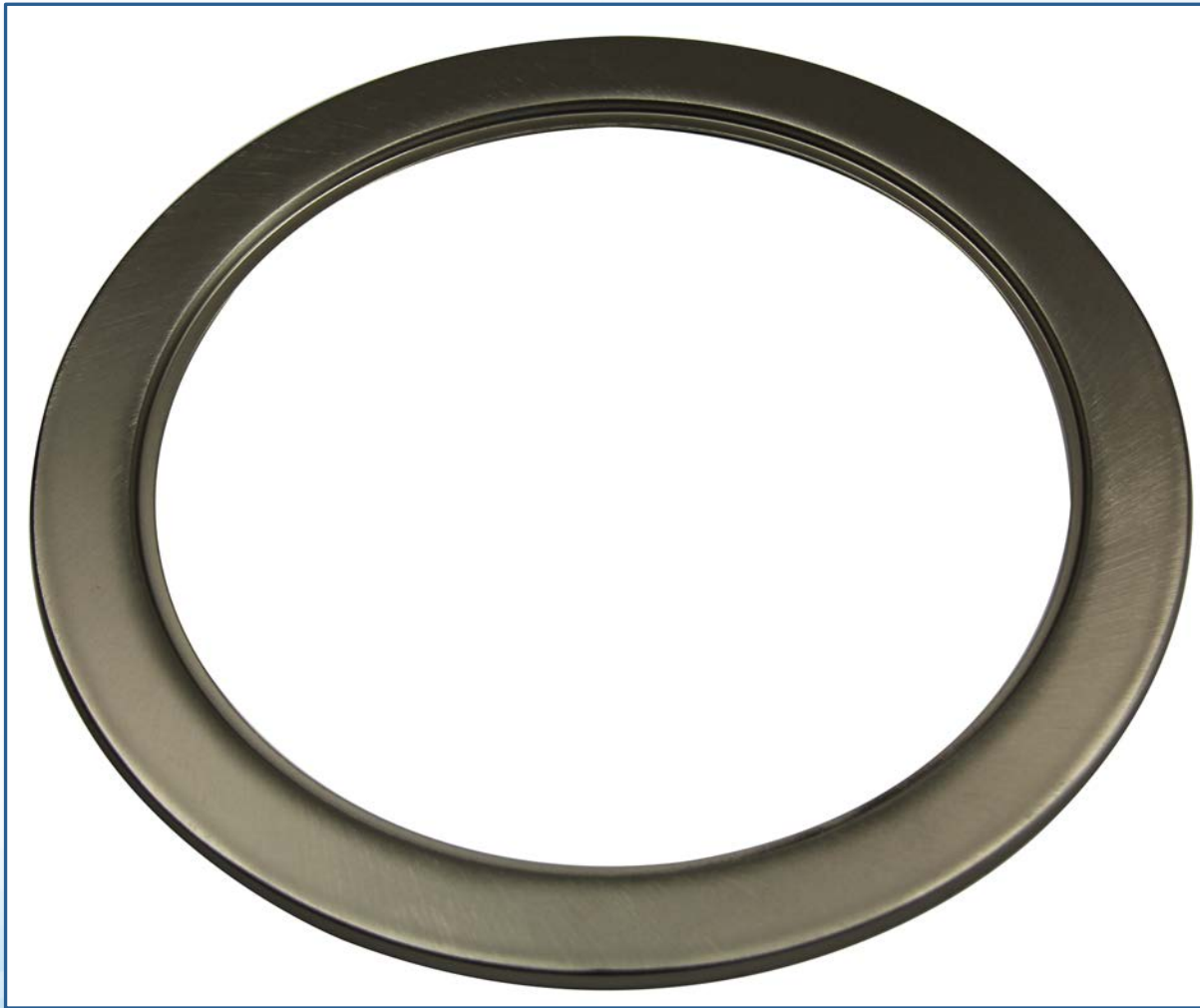
## RR8-XWHTRING GOOF RING





## OPTIONAL 4/6/8" BRUSHED NICKEL TRIM RINGS FOR COMMERCIAL DOWNLIGHTS & FIXTURES

---



## 0-10V MODEL

### RR825xxW

- 80 lm/w min efficacy
- Reflector, Trim and module are a one piece integral design
  - No customization
- 120-277v, 0-10v dimmable
- Energy Star Qualified



## BATTERY BACKUP

- April Launch
- Complete Fixture Only
- Assembled in USA Only
- Battery lifetime for the EM (battery) unit with the downlights is 5 years minimum (which matches our warranty.)
- The whole fixture needs to be replaced when it goes bad. There's no way to field replace the EM unit. (This is consistent with other products that have an EM option.)

RCF415xxWEM
-------------

RCF423xxWEM
-------------

RCF615xxWEM
-------------

RCF623xxWEM
-------------

RCF630xxWEM
-------------

RCF815xxWEM
-------------

RCF823xxWEM
-------------

RCF830xxWEM
-------------



## COMPATIBLE DIMMER BRANDS

Different MaxLite products are compatible with different controls. **All downlight data sheets have a verified by MaxLite list included** so you'll always know what will work for your application.

**LED 4" ARCHITECTURAL RECESSED  
DOWNLIGHT FIXTURES**  
RAF4 Series

Page: 2 of 2

---

**SPECIFICATIONS:**

ITEM	SPECIFICATION	15 WATTS - DETAILS		24 WATTS - DETAILS	
		RAF41530W	RAF41540W	RAF42630W	RAF42640W
GENERAL PERFORMANCE	Color Temperature	3000K	4000K	3000K	4000K
	Lumens Delivered (lm)	785	875	1340	1515
	Efficacy (lm/w)	56	63	52	58
	Lumen Maintenance (L70)	50,000 hours		50,000 hours	
ELECTRICAL	Power Consumption	14 Watts		26 Watts	
	Power Factor	>0.9		>0.9	
	Input Voltage	120V/277V		120V/277V	
PHYSICAL	Mounting	Concealed Spine, 1/2" EMT Conduit, C Channel, T Grid (order 24" adjustable hanger bars MLRH-HBAR)		Concealed Spine, 1/2" EMT Conduit, C Channel, T Grid (order 24" adjustable hanger bars MLRH-HBAR)	
	Operating Temperature	-4 F to 113 F		-4 F to 113 F	
APPLICATION	Environment	Dry, Damp		Dry, Damp	
	Insulation	Non-IC, insulation must be kept 3" from all sides of the housing		Non-IC, insulation must be kept 3" from all sides of the housing	
	Warranty	5 Year		5 Year	

**ORDERING:**

ORDER CODE	MODEL	OUTPUT (LUMENS)	CCT	POWER (WATTS)
73675	RAF41530W	785	3000K	14
73676	RAF41540W	875	4000K	
73435	RAF42630W	1,340	3000K	
73437	RAF42640W	1,515	4000K	26

\*Please contact your MaxLite representative to order products that don't have order codes listed here.

**COMPATIBLE DIMMERS:**

MAKE	DIMMER MODEL
Lutron	CTCL-153PD*
Lutron	DVCL-153PL*
Lutron	CTELV-303P
Lutron	DVELV-303P
Lutron	LGCL-153PL*
Leviton	IPI10 Leviton

\* Dimming control should be adjusted to 5% minimum light output level in order to avoid flickering. Please consult dimming control instruction manual for specific procedure.

Phone: 1-800-555-5620 | Fax: 973-244-7333 | Web: www.maxlite.com | E-mail: info@maxlite.com

MAX14039 Revised: 11-19-14

### COMPATIBLE DIMMERS:

MAKE	DIMMER MODEL
Lutron	CTCL-153PD*
Lutron	DVCL-153PL*
Lutron	CTELV-303P
Lutron	DVELV-303P
Lutron	LGCL-153PL*
Leviton	IPI10 Leviton

\* Dimming control should be adjusted to 5% minimum light output level in order to avoid flickering. Please consult dimming control instruction manual for specific procedure.



## MAXLITE'S LED RECESSED FIXTURES



### LED Recessed Downlight Retrofits

The LED Recessed Downlight Retrofits are replacements for existing, less efficient incandescent and compact fluorescent (CFL) light sources commonly used in the recessed downlighting marketplace. ENERGY STAR®-qualified models are available.



### LED Recessed Downlight Fixtures

The LED Recessed Downlight Fixtures are designed for new construction and remodel recessed projects.



### LED Faux Cans

ENERGY STAR-certified LED Faux Cans accomplish the task of recessed downlighting without the time and expense of working with drywall.



### LED Commercial Recessed Downlight Fixtures

Offered in a variety of aperture sizes, color temperatures and wattages, MaxLite's ENERGY STAR-certified LED Commercial Recessed Downlights are an easy-to-install, high-performance lighting solution.



### LED Commercial Recessed Downlight Retrofits

The commercial-grade LED Recessed Downlight Retrofits are ideal for retrofitting inefficient fixtures in malls, hospitals, airports, offices, lobbies and other commercial applications. ENERGY STAR®-qualified models are available.



### LED Architectural Downlight Fixtures

MaxLite's Energy Star qualified Architectural Downlight Fixtures are offered in 4, 6 and 8' aperture sizes, work with a wide variety of ceiling systems and can be vertically adjusted up to 5 inches.

## LED ARCHITECTURAL DOWNLIGHT FIXTURES



**LED 4" ARCHITECTURAL  
RECESSED DOWNLIGHT  
FIXTURE  
(RAF4 SERIES)**



**LED 6" ARCHITECTURAL  
RECESSED DOWNLIGHT  
FIXTURE  
(RAF6 SERIES)**



**LED 8" ARCHITECTURAL  
RECESSED DOWNLIGHT  
FIXTURE  
(RAF8 SERIES)**

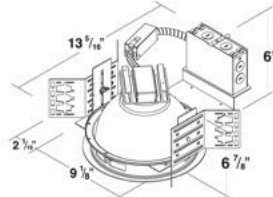
# ARCHITECTURAL DOWNLIGHT FIXTURES



PROJECT NAME: \_\_\_\_\_ CATALOG NUMBER: \_\_\_\_\_  
 NOTES: \_\_\_\_\_ FIXTURE SCHEDULE: \_\_\_\_\_

Page: 1 of 2

## LED 8" ARCHITECTURAL RECESSED DOWNLIGHT FIXTURE RAF8 Series



### PRODUCT DESCRIPTION:

MaxLite's NON-IC architectural recessed downlight fixtures are a great alternative to HID, fluorescent, and traditional incandescent fixtures. Recommended for buildings where superior quality of light, flexible installation options, and durability are required.

### FEATURES:

- Unique optic allows high lumen transmission while concealing the LED light source resulting in efficient, inviting light and minimizing LED glare
- Architectural housing can accommodate 1/2" EMT conduit, HB24 or HBC-24 bar hanger, lathing channels, T-Bar grid ceilings or concealed spline ceilings
- Architectural fixture provides up to 5" vertical adjustment.
- Junction box listed for through branch circuit wiring (Max. 8 no. 12AWG 90C conductors, 4 in and 4 out)
- Suitable for damp location use
- Dimmable down to 5% (120v only)
- Five year warranty

### ELECTRICAL:

- Universal voltage, driver can be supplied with 120V-277V
- LED array will provide minimum 50,000 hour L<sub>50</sub> lifetime

MODEL SELECTION (Full list of order codes on pg. 2) Typical order example: RAF81530W

RAF	8			W
FAMILY	SIZE	WATTAGE	COLOR TEMPERATURE (CTT)	TRIM COLOR
RAF= Architectural Recessed Frame	8= 8" Nominal diameter reflector	15= 15 Nominal watts 25= 25 Nominal watts 34= 34 Nominal watts	30= 3000K 40= 4000K	W= White

ACCESSORIES			
ORDER CODE	MODEL NUMBER	DESCRIPTION	ACCESSORIES IMAGE
73716	MURR-HBAR	Hanger Bar Kit for Joists and T-Grid Ceilings	
74088	RR8-BNRING	8" Brushed Nickel Trim Ring	

## MAXLITE'S NEW ADJUSTABLE DOWNLIGHT

---





# University.MaxLite.com



## MAXLITE LIGHTING & TECHNOLOGY UNIVERSITY



**Product Training  
Modules**



**Earn Your  
Lighting Degree**



**Other Lighting &  
Technology Resources**

The department function is to train and provide product training material for all MaxLite representatives, customers and employees. The goal of the department is to educate the staff and rep network to a full and complete understanding of our products, technologies, marketplace, and business environments. We endeavor to educate how and why lighting functions, repair and replacement, as well as compare to competitors or listing requirements. We will accomplish this by providing the tools and services proactively and as needed to supplement.

[Click here to get started!](#)

## Custom Product & Technology Training

Ask about our FREE custom webinar/training services!

- Lunch and Learn
- Breakfast and Learn
- Online via webinar
- Focus on a specific MaxLite product or a broad overview
- Focus on LED Technology or general lighting training
- Custom Presentations for your customers or staff



Email Greg Murphy at [gmurphy@maxlite.com](mailto:gmurphy@maxlite.com) for more info!

## MAXLITE'S UTILITY REBATE SERVICES

**MaxLite makes it easy to find and complete rebates for you and your customers!**

- C&I Rebate Finder
- Utility Rebate Flyers
- Custom Rebate Calculator
- DLC / ENERGY STAR / LDL Product Listings
- Utility Rebate Paperwork Service



Email Joe Pater at [jpater@maxlite.com](mailto:jpater@maxlite.com) for more info!

## QUESTIONS/ANSWERS

Thank you everyone for your attention! Please feel free to use this opportunity to ask any questions you may have about MaxLite or the products/topics discussed in this presentation.

FOR MORE INFORMATION ABOUT OTHER MAXLITE PRODUCTS, OR FOR LIGHTING QUESTIONS IN GENERAL; PLEASE CONTACT:

[info@maxlite.com](mailto:info@maxlite.com)

<http://www.maxlite.com>

1-800-555-5629