

WELCOME

MaxLite has the most expansive line of LED Troffer products & price points in the industry. To maintain our place as the top supplier, MaxLite is now offering Troffer Retrofit Kits.

February 28, 2013 Webinar

- Quick review of current troffer offering
- The new RKT LED Retro-fit kit troffers
- The new versatile RKL LED Retro-fit “V” Bar kits
- Thermal dot technology
- Installation (Piece of cake!)



- Home
- MaxLite Product Training Modules
- Other Lighting & Technology Resources
- Common Lighting Terms & Definitions

Home > LED Indoor Fixtures

LED Indoor Fixtures



ECO-T – 2x2 & 2x4



Performance Series Flat Panels
(1x4, 2x2, & 2x4)



Edge Lit LED Panels
(1x4, 2x2, & 2x4)



MRI LED Panels
(1x4 & 2x2)



SHO Direct Lit LED Panels
(1x4, 2x2, & 2x4)



LED Round Pendant

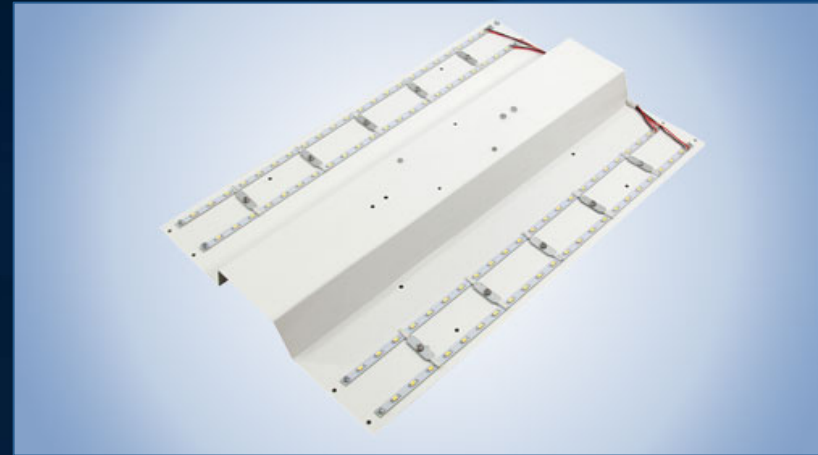
Visit MaxLite University at: <http://university.maxlite.com>

RKT SERIES OVERVIEW

Overview:

MaxLite's one-piece LED RKT Series Recess Troffer Retrofit Kit is an economical, easy-to-install upgrade to LED lighting in existing recessed troffers, which avoids removal of existing fixtures and associated asbestos abatement. Available in diverse color temperatures and lumen outputs in standard sizes, the Kit uses thermal dot technology for temperature and warranty control.

The lightweight, eight-pound RKT Kit replaces traditional fluorescent troffers in lay-in or T-grid ceilings in a variety of commercial and institutional applications, including offices, lobbies, hallways and conference rooms in schools, municipalities, libraries, airports, healthcare facilities, showrooms, corporate campuses, retailers and hospitality environments.



FEATURES & BENEFITS

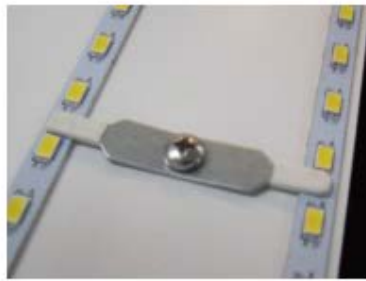
- **Durable one-piece galvanized steel housing**
LED carriage is constructed of durable one-piece galvanized steel housing that acts as a heat sink for thermal control.
- **Easy upgrade and replacement**
Four LED strips with LM80-rated LED chips, assembled on aluminum and copper clad FR4 printed circuit boards, are mounted to the carriage with fasteners and are secured with screws for easy upgrade and replacement
- Fits both parabolic and lensed door housings
Designed to fit both parabolic and lensed door housings to suit the needs of most installations
- Avoids removal of existing fixture from ceiling cavity
Avoids the removal of the existing fixture from the ceiling cavity and the associated asbestos abatement
- Quick- and easy-installation
Pre-punched holes for quick- and easy-installation into existing ceiling troffers
- Color uniformity and even light distribution
Constructed with LM-80-rated chips with high-ranked binning that ensures color uniformity and produces accurate color rendering, even light distribution and minimal glare
- Thermal dot technology for thermal and warranty control
Uses thermal dot technology for thermal and warranty control
- **50,000 hour life**
50,000 hour life, or more than 17 years operating 8 hours a day, is based on L70 standards (at 70 degrees F based on LM80 data). When the LEDs reach 30 percent lumen depreciation, end-of-life is reached. This life cycle far exceeds halogen and CFL, and is almost double the life of linear fluorescents.
- **Dimmable and non-dimmable models**
Fixture is available in Dimmable and non-dimmable models for lighting comfort
- **Compatible with building controls, motion sensors, timers and daylight harvesting systems**
building controls, motion sensors, timers and daylight harvesting systems allow for additional energy savings
- **Linkable**
Up to 10 fixtures can be linked to each master fixture for simultaneous control
- **Buzz and flicker free**
While fluorescent fixtures can buzz and flicker, and may contribute to headaches and eye fatigue, the RKT Series Recess Troffer Retrofit Kit is constructed with LM-80-rated LEDs and enable silent and flicker-free operation.

SPECIFICATIONS

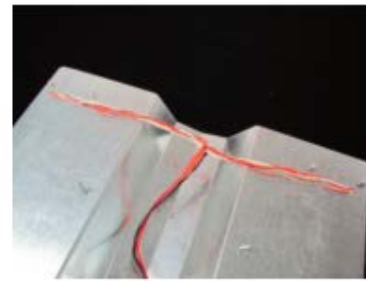
| Model Number | RKT2014U4535DV | RKT2014U4541DV | RKT2014U4550DV | RKT4514U5535DV | RKT4514U5541DV | RKT4514U5550DV |
|------------------------------------|----------------|----------------|----------------|----------------|----------------|----------------|
| » Performance | | | | | | |
| Input Wattage | 45.0 W | 45.0 W | 45.0 W | 55.0 W | 55.0 W | 55.0 W |
| Delivered Lumens (lms.) | 3590.0 lms. | 3420.0 lms. | 3770.0 lms. | 4570.0 lms. | 4498.0 lms. | 4900.0 lms. |
| Efficacy (LM/W) | 79.0 lms./w | 76.0 lms./w | 83.0 lms./w | 83.0 lms./w | 85.0 lms./w | 89.0 lms./w |
| Color Rendering Index (CRI) | 85 | 85 | 85 | 85 | 85 | 85 |
| Color Temperature (CCT) | 3500 K | 4100 K | 5000 K | 3500 K | 4100 K | 5000 K |
| Min. Ambient Temp (°F) | -30 °F | -30 °F | -30 °F | -30 °F | -30 °F | -30 °F |
| Max. Ambient Temp (°F) | 130 °F | 130 °F | 130 °F | 130 °F | 130 °F | 130 °F |
| » Dimming Control | | | | | | |
| 0-10V Dimming | Yes | Yes | Yes | Yes | Yes | Yes |
| Dimming compatible | Yes | Yes | Yes | Yes | Yes | Yes |
| Dali Dimming | No | No | No | No | No | No |
| DMX Dimming | No | No | No | No | No | No |
| Min. Dimming Level (%) | 10% | 10% | 10% | 10% | 10% | 10% |
| » Longevity | | | | | | |
| L70 Life (Hours) | 50000 hours | 50000 hours | 50000 hours | 50000 hours | 50000 hours | 50000 hours |
| Warranty (Years) | 5 years | 5 years | 5 years | 5 years | 5 years | 5 years |
| » Physical | | | | | | |
| Product Height (Inches) | 2.5 " | 2.5 " | 2.5 " | 2.5 " | 2.5 " | 2.5 " |
| Product Width (Inches) | 14.0 " | 14.0 " | 14.0 " | 14.0 " | 14.0 " | 14.0 " |
| Product Depth (Inches) | 20.0 " | 20.0 " | 20.0 " | 45.0 " | 45.0 " | 45.0 " |
| Product Weight (lbs.) | 6.0 lbs. | 6.0 lbs. | 6.0 lbs. | 8.0 lbs. | 8.0 lbs. | 8.0 lbs. |
| » Electrical | | | | | | |
| Input Voltage Range (V) | 120-277 | 120-277 | 120-277 | 120-277 | 120-277 | 120-277 |
| OP. Frequency (Hz./kHz) | 50/60 | 50/60 | 50/60 | 50/60 | 50/60 | 50/60 |
| Power Factor | 0.99 | 0.99 | 0.99 | 0.99 | 0.99 | 0.99 |
| » Validations and Downloads | | | | | | |
| ULus/ ETLus | Yes | Yes | Yes | Yes | Yes | Yes |
| cUL/cETL | Yes | Yes | Yes | Yes | Yes | Yes |



Screws instead of rivets allow easy upgrade or replacement



Multiple hold down clips ensure thermal contact and easy upgrade



Detailed wiring harnesses with Molex® connectors facilitate quick installation



Screws instead of rivets allow easy upgrade or replacement

Ordering example: RK4514U4027DV

| Retrofit Kit | Kit Application | Dims. (L/dia x W x H/prj) | Operating Voltage | Nominal Wattages | CCT | Dimming |
|--------------|-----------------|--|---|--------------------------|--|---|
| RK | T=Troffer | 4514 = 45" x 14" (2x4) 4510 = 45" x 10" (1x4) 2014 = 25" x 14" (2x2) | U=UNIVERSAL 120-277V 1=120V 2=277V 3= 264-347V 4= 480V | 45W 55W (45" ONLY) | 27=2700K 35=3500K 41=4100K 50=5000K | BLANK= NON-DIMMING DV= 0-10V DIMMING |

DATA SHEETS

RKT-Recess Troffer Retrofit Kits



MaxLite's RKT Recess Troffer Retrofit Kits offer an economical alternative to upgrade to long lasting LED lighting, while not invading ceiling space or replacing existing fixture bodies. The RKT Series fits most commercially made fluorescent troffer bodies with multiple voltage, wattage and output versions.

FEATURES:

- One piece panels for easy handling and pre-aligned LED arrays
- Pre-punched holes for easy fastener insertion
- Routed harnesses with Molex® connectors
- Screw fasteners allow for possible upgrades, and easy repair if needed
- Uses thermal dot technology for easy warranty control
- Multiple voltages, wattages and CCTs available
- 0-10 volt dimming available
- LM-80 qualified LEDs
- 100-277V input
- CRI: >82

CONSTRUCTION:

- Galvanized and painted 22 ga. body for maximum life and reflectance
- Insulated LED board mounting clips
- Insulated mounting grommets
- Integrated tunnel cover houses driver
- VHB adhesive holds LED strips in contact with body for thermal efficiency
- 'S' hook for temporary hanging in installation

| |
|----------------|
| PROJECT NAME |
| CATALOG NUMBER |
| NOTES |
| FIXTURE TYPE |



Patent Pending

Ordering example: RK4514U4027DV

| Retrofit Kit | Kit Application | Dims. (L/dia x W x H/prj) | Operating Voltage | Nominal Wattages | CCT | Dimming | Supplier Specific Housing |
|--------------|-----------------|--|---|--------------------------|--|---|---|
| RK | T=Troffer | 4514 = 45" x 14" (2x4) 4510 = 45" x 10" (1x4) 2014 = 25" x 14" (2x2) | U=UNIVERSAL 120-277V 1=120V 2=277V 3= 264-347V 4= 480V | 45W 55W (45" ONLY) | 27=2700K 35=3500K 41=4100K 50=5000K | BLANK= NON-DIMMING DV= 0-10V DIMMING | Blank= Generic XX= See table on page 2 |



RKT-Recess Troffer Retrofit Kits

SPECIFICATIONS:

| Item | Specification | Detail - 2'x2' Kits | Detail - 1'x4' Kits | Detail - 2'x4' Kits |
|---------------------|--|--|-------------------------------------|---|
| General Performance | Contact MaxLite for specific LM-79 Performance | L1 = Lithonia 2G18 lensed 2X2 | L4 = Lithonia G18 lensed 1X4 | L5 = Lithonia 2G18 lensed 2X4 |
| | | L2 = Lithonia 2SP8 lensed 2X2 | C7 = Columbia Lighting lensed 4P514 | L6 = Lithonia 2PM3N 1/2 cell 2x4 parabolic |
| | | L3 = Lithonia 2PM3 9 cell 2x2 Parabolic | | C3 = Cooper Metalux 2GC8 lensed 2x2 |
| | | C1 = Cooper Metalux 2GC8 lensed 2x2 | | C4 = Cooper Metalux 2HP3 1/2 cell 2x4 parabolic |
| | | C2 = Cooper Metalux 2HP3 9 cell 2x2 parabolic | | C8 = Columbia Lighting lensed 4P524 |
| | | C5 = Columbia Lighting lensed 4P522 | | C9 = Columbia Lighting P224 1/2 cell parabolic |
| Electrical | Wattage | NOMINAL SPECIFIED | | |
| | Input Voltage | NOMINAL SPECIFIED | | |
| Physical | Initial Lumens | 4500-5000 | 4500-5000 | 5500-6000 |
| | Delivered Lumens* | 3400-3700 | 3400-3700 | 4450-4900 |
| | Dimensions | 25" x 14" x 2.5" | 45" x 10" x 2.5" | 45" x 14" x 2.5" |
| | Weight | 6 lbs. | 6 lbs. | 8 lbs. |
| | Mounting | Self tapping hex head (4 Pics.) | Self tapping hex head (4 Pics.) | Self tapping hex head (6 Pics.) |
| | Junction Temp Limits | 78°C is thermal dot limit (170°F) | | |
| | Ambient Operating Temperature | -34°C to 54°C (-30°F to 130°F) | | |
| | Humidity | 20% - 85% RH, non condensing | | |
| Certification | Certification | ETL, FCC, LM79, LM80 | | |
| | Material Usage | RoHS compliant; no mercury | | |
| | Environment | INDOOR UNLESS SPECIFIED OTHERWISE | | |
| | LED Class | L70 rated to 50,000 hours | | |
| | Warranty | 5 year when all thermal and electrical limit complied with | | |

* Reference delivered lumens based on installation to standard 2.5" troffer and acrylic prismatic diffuser



THERMAL DOT TECHNOLOGY

These kits come standard, featuring thermal dot technology to protect you and your customers! A space age polymer permanent decal is applied, which shows the maximum operating temperatures for the retrofit kit LED's and driver. Simple visual recognition shows when possible heat limits have been exceeded, thus protecting manufacture components, installers, and owners from surprise failures or premature end of life conditions.



V BAR TROFFER RETROFIT

- 1x4, 2x2 & 2x4
- Pre-boxed one kit per box
- 25 per case
- 45 & 55W
- 84 LPW
- 3780 and 4620 Lumens



RKL-Retrofit Kit Strips



The RKL Retrofit Kit Strips are economy level replacements for both 2'x4' and 2'x2' recessed troffers in existing drop-in ceilings. The Kits are easily field installed using simple hand tools with minimum modification to the existing housings.

FEATURES:

- Twin aluminum carrier angles for added heat sinking and optic diffusion
- 120-277V class 2 UL driver included
- 45 deg. optic angle of each strip for beam spread
- 4 LED FR4 light strips for 2'x2'
- 4 LED FR4 light strips for 2'x4'
- 0-10V dimming standard
- All components are discrete parts allowing for sustainable repair and upgrade cycles
- 50,000 hour life at L70 standards
- Uses thermal dot technology for easy warranty control* to features list

| | |
|----------------|---------------|
| PROJECT NAME | |
| CATALOG NUMBER | |
| NOTES | |
| FIXTURE TYPE | ROOM SCHEDULE |



CONSTRUCTION:

- 1 x 1 x .06 aluminum angle carriers
- Sealed driver
- Completed wiring harness with Tyco quick connection plugs
- LED strips screwed to carrier angle for field replacement if needed
- < 3 pounds for easy handling over head

| Watts | Order Number | Model Number | Description | Delivered Lumens | Dimensions (L"xW"xH") | CCT |
|-------|--------------|--------------|--|------------------|-----------------------|------|
| 45 | 71867 | RKL23U4535 | Retrofit kit linear strips universal voltage | 3768 | 22.5" x 1.5" x 2.5" | 3500 |
| 45 | 71868 | RKL23U4541 | Retrofit kit linear strips universal voltage | 3421 | 22.5" x 1.5" x 2.5" | 4100 |
| 45 | 71869 | RKL23U4550 | Retrofit kit linear strips universal voltage | 3768 | 22.5" x 1.5" x 2.5" | 5000 |
| 55 | 71871 | RKL45U5535 | Retrofit kit linear strips universal voltage | 4569 | 45" x 1.5" x 2.5" | 3500 |
| 55 | 71870 | RKL45U5541 | Retrofit kit linear strips universal voltage | 4498 | 45" x 1.5" x 2.5" | 4100 |
| 55 | 71872 | RKL45U5550 | Retrofit kit linear strips universal voltage | 4903 | 45" x 1.5" x 2.5" | 5000 |
| 45 | 71878 | RKL23U4535DV | Dimming Retrofit kit linear strips universal voltage | 3768 | 22.5" x 1.5" x 2.5" | 3500 |
| 45 | 71877 | RKL23U4541DV | Dimming Retrofit kit linear strips universal voltage | 3421 | 22.5" x 1.5" x 2.5" | 4100 |
| 45 | 71876 | RKL23U4550DV | Dimming Retrofit kit linear strips universal voltage | 3768 | 22.5" x 1.5" x 2.5" | 5000 |
| 55 | 71874 | RKL45U5535DV | Dimming Retrofit kit linear strips universal voltage | 4569 | 45" x 1.5" x 2.5" | 3500 |
| 55 | 71875 | RKL45U5541DV | Dimming Retrofit kit linear strips universal voltage | 4498 | 45" x 1.5" x 2.5" | 4100 |
| 55 | 71873 | RKL45U5550DV | Dimming Retrofit kit linear strips universal voltage | 4903 | 45" x 1.5" x 2.5" | 5000 |

Specifications are subject to change without notice

MaxLite®: 1-800-555-5629 | Fax: 973-244-7333 | Web: www.maxlite.com | E-mail: info@maxlite.com



Revised: 1-7-13

RKL-Retrofit Kit Strips



ASSEMBLY:

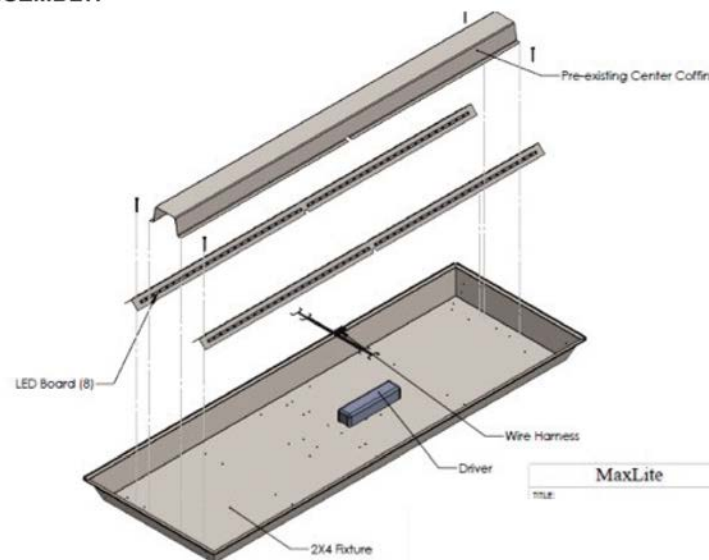



Image depicts light engine being placed into 2'x4' fixture (2'x2' similar using one of two pcs.)

MaxLite®: 1-800-555-5629 | Fax: 973-244-7333 | Web: www.maxlite.com | E-mail: info@maxlite.com



Revised: 1-7-13



YouTube

0:23 / 1:29

Analytics Video Manager

MaxLite LED RKT Series Recess Troffer Retrofit Kit Installation Video

MaxLiteNewsRoom · 62 videos

Subscribe

Click the image to play video or visit: <http://www.youtube.com/watch?v=3gac7a7m5io>

MaxLite Webinars

MaxLite has been hosting free webinars once per month on a variety of topics since 2010. A lot of great content has been presented, here's how to find it:

- To browse previous MaxLite Webinars, visit: <http://www.maxlite.com/webinar>
- Check/Subscribe to our YouTube channel

Class Is In Session! 24/7

- Visit the MaxLite Lighting & Technology University at: <http://university.maxlite.com> to learn about all of MaxLite's products and gain access to many other lighting resources!



QUESTIONS & ANSWERS:

Thank you everyone for your attention.

This webinar session will be left open for the next 10 minutes to allow time for questions. We will answer as many questions as we have time for right now, but ALL questions will be answered via e-mail within the next 24 hours.

Thanks again for attending, and we hope to speak to you again, soon!

FOR MORE INFORMATION ABOUT OTHER MAXLITE PRODUCTS; OR FOR LIGHTING QUESTIONS IN GENERAL; PLEASE CONTACT:

info@maxlite.com

www.maxlite.com

1-800-555-5629

Or contact your MaxLite Representative or MaxLite's Regional Sales Manager.