



MPulse™

Surface Mount Luminaire

MaxLite®
A NEW WAVE OF LIGHT



Visual Comfort Optics

Through an invisible light source, MPulse uniformly distributes light with minimal glare for soft, eye-pleasing illumination.



Flexible Design

Thoughtfully designed for downlighting or wall washing, MPulse features an adjustable head that enable its use as an open face or full cutoff and dark sky compliant fixture.



Field Ready

It takes just one person to install and service the MPulse luminaire. The back plate mounts to the surface and allows the wall pack to hang for easy wiring. Once the power supply is connected, the fixture clicks into place and secures with screws. A hinged back cover provides access to the driver for quick and easy replacement in the field.

MPulse™

Surface Mount Luminaire



CONSTRUCTION:

- Die Cast Aluminum housing
- Glass lens material

ELECTRICAL:

- High efficiency driver, <15% THD @ 277V, > 90% PF

DESIGN:

- 0-45° field adjustable head
- Optional extender for mounting arm accommodates battery backup

MOUNTING:

- Mounts to standard 4" j-box
- Maximum fixture weight: 13 lbs

OPTICS:

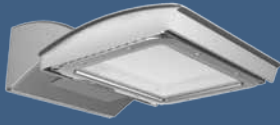
- Type III and IV

PROTECTION:

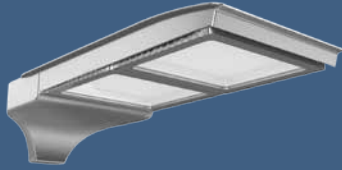
- Listed for use in wet locations to UL standards
- IP65 rating
- 100,000 lumen maintenance >77% (L77) at 25°C
- 10-year limited warranty

LUMEN	COLOR TEMPERATURE	VOLTAGE	FINISH	OPTIONS
3,125	3000K	120-277V	Silver Chrome	Motion Sensor
6,250	4000K	347-480V	Polished Bronze	Button Photocell
12,500	5000K		Black	External Battery Backup
			White	
			RAL = custom	

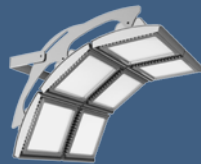




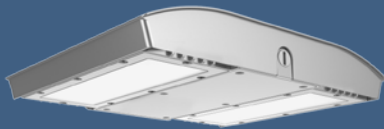
Surface Mount Luminaire



Area Light



Flood Lights



Canopy



Bollard

