



ARCHITECTURAL OPTICAL PANEL

Images

The panels can be etched with repeating patterns, photographic or illustrative images, text, or combinations of these.

The Light Show

The edge-lit light show is produced by mixing different color LEDs, and programming them to run through a sequence. The show can be one color, multi-color or a mixed display. The result is a wash of color, ever changing as the program cycles, producing beautiful backgrounds, generating excitement, evoking mood, or conveying a subtle message.

Works Best

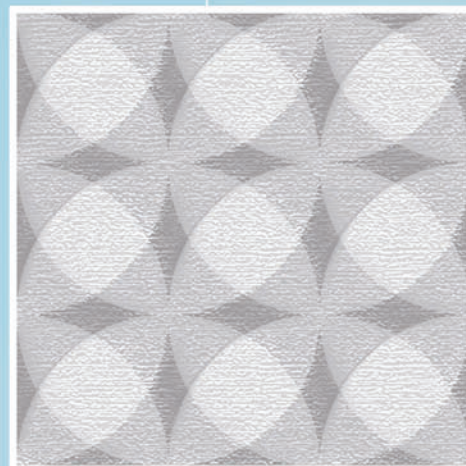
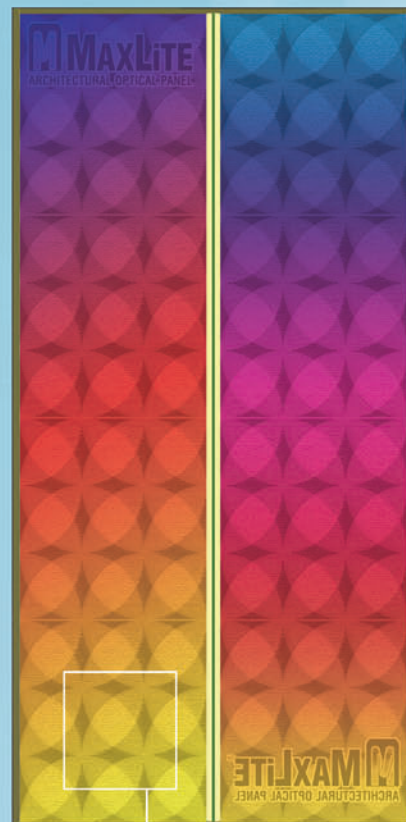
The panels are particularly effective with an etched repeating pattern as background. As the different colors wash over the etching, each color emphasizes a different part of the etching making it seem to move and change shape.

Seen From Inside

The panels are translucent and can be installed over windows. During the day, the translucent panel will admit sunlight, providing natural light for the room. At night when the panels are lit, the occupants will experience the same light show as the viewer outside. The panels can also be free-standing, because the panels are viewable from both sides.

LED Module

- LED Package: RGB Full Color LED
- Low current DC converter
- 5 Ch. Communication Server
- 50,000 hour life based on L70 Standards
- 80" x 40" panel = 90W
- 80" x 20" panel = 58W



Pattern Detail

Simulation



MAX10232-05