

PRODUCT FOCUS **GU24**
SELF-BALLASTED SOCKETS

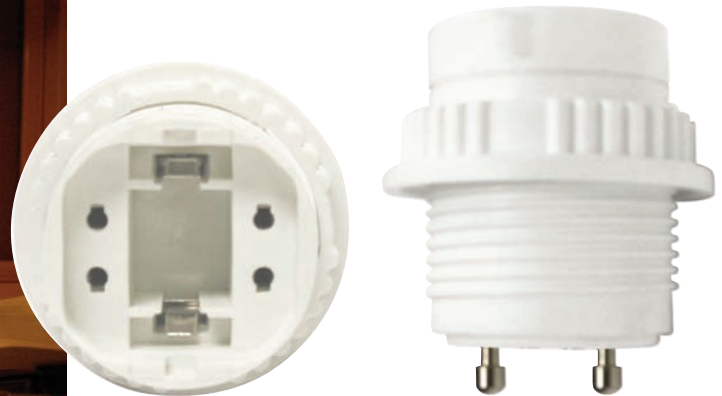
Compact Fluorescent Lamp



FOR >> Fixtures with the latest ballast & socket technology



MAX9807-1109



ML13RGU

ML18RGU

ML26RGU

ML13RGU277

ML18RGU277

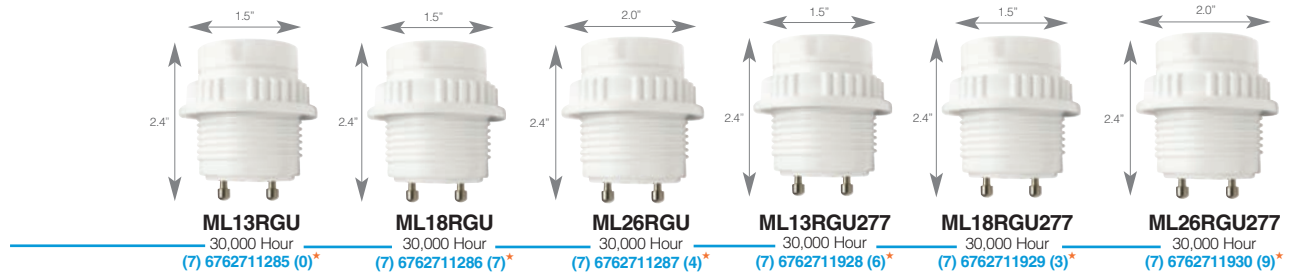
ML26RGU277

- Now with 90°C Max. Ballast Case Temperature
- Fits all fixtures with GU24 base
- Long life - up to 30,000 hours
- Saves up to 75% in energy costs - instant on, flicker-free
- Also available; full line of PL Lamps
- Available in 120V & 277V



*Energy Star Qualified

PRODUCT FOCUS **GU24**
SELF-BALLASTED SOCKET
Compact Fluorescent Lamp



120V SELF-BALLASTED SOCKET SPECIFICATIONS

Watts	Order Code	Description	Type	Adapter Life (Hrs)	Pack Type	Case Pack	Dimensions (W" x MOL")
* 13	11285	ML13RGU Adaptor for 13W GU24 CFL	Two Piece	30,000	Box	48	1.5 x 2.4
* 18	11286	ML18RGU Adaptor for 18W GU24 CFL	Two Piece	30,000	Box	48	1.5 x 2.4
* 26	11287	ML26RGU Adaptor for 26W GU24 CFL	Two Piece	30,000	Box	48	2.0 x 2.4

277V SELF-BALLASTED SOCKET SPECIFICATIONS

Watts	Order Code	Description	Type	Adapter Life (Hrs)	Pack Type	Case Pack	Dimensions (W" x MOL")
13	70618	ML13RGU277 Adaptor for 13W GU24 CFL	Two Piece	30,000	Box	48	1.5 x 2.4
18	70619	ML18RGU277 Adaptor for 18W GU24 CFL	Two Piece	30,000	Box	48	1.5 x 2.4
26	70620	ML26RGU277 Adaptor for 26W GU24 CFL	Two Piece	30,000	Box	48	2.0 x 2.4

SPECIAL NOTES

- >> Now with 90°C Max. Ballast Case Temperature
- >> 2 year warranty

APPLICATIONS

- Ceiling fixtures, pendants
- Outdoor fixtures, recess fixtures
- Wall sconces, vanity bars
- Floor & table lamps

BENEFITS

- Now with 90°C Max. Ballast Case Temperature
- Fits all fixtures with GU24 base
- Small size fits all standard fixtures
- Long life - up to 30,000 hours
- Saves up to 75% in energy costs
- Rapid start electronic ballast with flicker-free operation

SPECIFICATIONS

- Ballast Type >> Electronic
- Starting Method >> Instant Start
- Input Line Voltage >> 120VAC
- Input Line Frequency >> 50/60HZ
- Mini. Starting Temp. >> 0°F
- Max. Ballast Case Temp. >> 90°C
- Color Rendering Index >> 84

MAX9807-1109

>> To see the full line of MaxLite PL Lamps go to www.maxlite.com and click on Product Line or go to www.maxlite.com/PDFs/FocusSheets/PLLampWebt.pdf

All specifications are subject to change without notice



This device complies with Part 18 of the FCC rules. If interference occurs move this product away from the device or plug into a different outlet. This product may cause interference to radio equipment and should not be installed near maritime safety communications equipment or other critical navigation or communication equipment operating between 0.45-30MHz.



FCC Certified
*UPC Codes
*Energy Star Qualified