

MS3 SENSOR SUPPLEMENT

MSHYTHC419VRC



PRODUCT DESCRIPTION:

The motion and daylight sensor helps to further conserve energy by turning the fixture on or off, or by dimming the light level when motion is detected or the level of daylight drops.

FEATURES:

- Tri-level controls
- 1-10V dimming
- 8 Hour Manual On Mode for LED Lamp
- Manual Override Options
- Daylight Monitoring
- Absence Detection Functions
- Optional Remote Control Operating Feature
- Master/slave Group Control Options: Multiple Sensors can Control the Same group of Ballast/Drivers

CONTROLS:

Motion/Daylight Sensor with Remote Control Compatibility:

0-10V microwave-based motion sensor with integral photocontrol, allowing for three output states: 100%; 10/20/30/50% output; or 0% output. Detection area, hold time, daylight threshold, and dimming level are configurable via DIP switches. At its maximum mounting height of 32 feet, the sensor can detect motion up to 30 feet away. Sensor mounted internally, behind lens.

A compatible remote control is available with the sensor, which allows for easy sensor configuration, reprogramming, and troubleshooting when necessary. Users should review supplementary motion sensor datasheets and the product Instruction Manual for detailed remote control programming and operation.

COMPATIBLE PRODUCTS:

- CPL Canopy Series

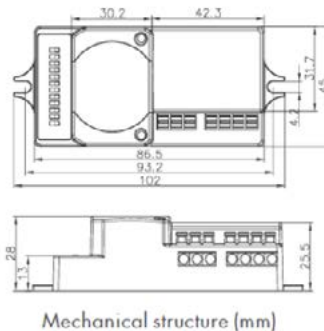
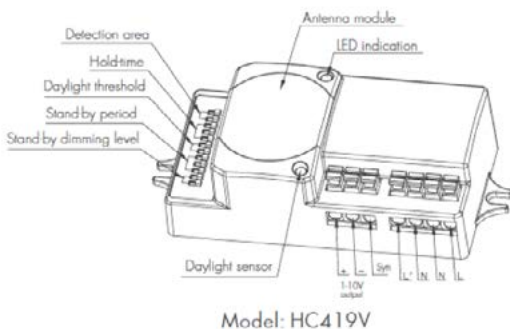
INSTRUCTIONS:

See compatible product instruction manuals.

NOTES:

* Installers should confirm mounting locations or applications are not in areas sensitive to radio frequency signals or detection

DIMENSIONS:



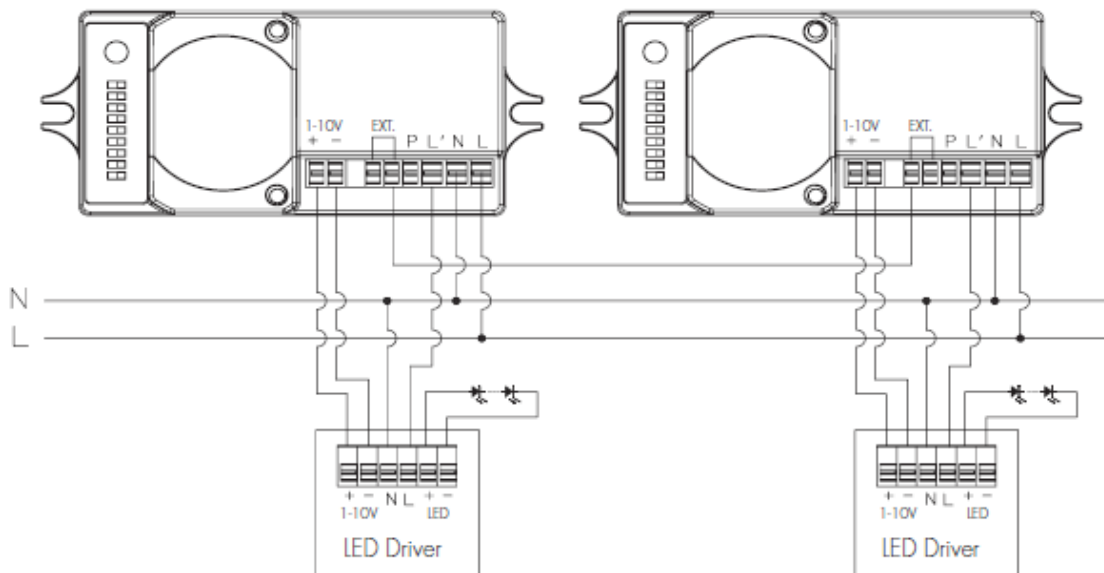
ORDERING:

APPLICATION	ORDER CODE	MODEL NUMBER	ITEM DESCRIPTION
CPL Series	107242	MSHYTHC419VRC	SENSOR MOTION/DAYLIGHT RF5.8GHZ 120-277V OCC DLH ADJUSTABLE IP20
Optional Remote Control	108133	RMHYTHRC-05	REMOTE CTRL PROGRAMMING HC403VRC/HC419VRC

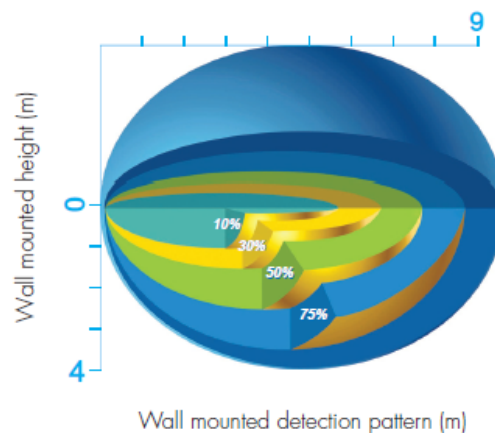
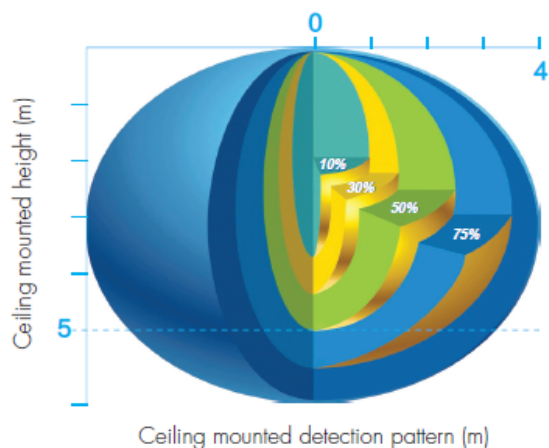
SPECIFICATION:

		MSHYTHC419VRC
ITEM	SPECIFICATION	DETAILS
ELECTRICAL ASPECTS	Operating Voltage	120-277VAC, 50Hz/60Hz
	Max Load	400W@120Vac; 1000W@277Vac
	Standby Power	<1W
	Warm Time	20s
	Detection Area	Max. 16 meters in diameter
	Hold Time	5s/30s/1min/5min/10min/20min/30min (TEST 2s/30s/1min/5min/10min/30min on RC)
	Standby Period	0s, 10s~1h, +∞
	Standby Dimming Level	10%~30%
	Daylight Threshold	2~50Lux/disable (2Lux / 10Lux / 50Lux / Lux disable on RC)
PHYSICAL ASPECTS	Sensor Principle	High Frequency (microwave)
	Microwave Frequency	5.8GHz+/-75MHz
	Microwave Power	<0.2mW
	Detection Range	Max. (0xH): 8m x 5m
	Detection Angle	30°~150°
	Mounting Height	Max.5m
	Operating Temperature	-20°C ~ +60°C
	IP Rating	IP20
	Certificate	Semko, CB, EMC, CE, R&TTE, SAA

WIRING DIAGRAM:



DETECTION PATTERN:



REMOTE CONTROL SETTINGS:

Permanent ON/OFF [button ①]

1. Press button ①, to select permanent ON or permanent OFF mode.
2. Press button ② ③ ④ to resume automatic operation. (Please refer to explanation below)

Auto Mode [button ②]

Press button ② to in initiate automatic mode. The sensor starts working and all settings remain as before the light was switched ON/OFF.

RESET [button ③]

Press button ③, all settings go back to the value of DIP switch settings.

Test 2s function [button ④]

1. Press button ④, the sensor goes into testmode (hold time 2s). N.B. the stand-by period and daylight sensor settings are disabled in test mode.
2. Press button ③ ④ ① to exit from this mode, and the sensor settings are changed accordingly.

Ambient daylight threshold [button ⑩]

Press button ⑩, the latest surrounding lux value overwrites previous lux value learned, and is set as the daylight threshold. This feature enables the fixture to function well in any environment.

Power output [button ⑤]

Press button ⑤, the output shifts between 80% and 100%, for energy saving purposes.

Dim +/- [button ⑨]

Press button ⑨ to adjust the light brightness between 10%~100% during hold-time. "+" increases the light level, "-" will decrease the light level.

Lux disable [button ⑭]

Press button ⑭, the built-in daylight sensor is disabled, the light will always operate upon detection regardless of ambient light level.

Manual override/ Semi-auto [button ⑬]

Press button ⑬, the sensor goes to manual override or semi-auto function.

Note: The buzzer beeps twice if it is in manual override mode, and beeps once if shifts to semi-auto mode.

Detection range [zone ⑥]

Press buttons in zone ⑥ to set detection range at 100% / 50% / 10%.

Hold time [zone ⑪]

Press buttons in zone ⑪ to set hold time at 30s / 1min / 5min / 10min / 30min.

Stand-by period [zone ⑫]

Press buttons in zone ⑫ to set the stand-by period at 0s / 10s / 1min / 10min / 30min / +∞.

Note: "0s" means on/off control; "+∞" means bi-level of dimming control, the light will never switch off. (i.e. the light remains at the stand-by dimming level until motion is detected.)

Stand-by dimming level [zone ⑦]

Press buttons in zone ⑦ to set the stand-by dimming level at 10% / 20% / 30% .

Daylight sensor [zone ⑬]

Press buttons in zone ⑬ to set daylight sensor at 2lux / 10lux / 50lux.